

# GROSS ANATOMY

## RADIOLOGY IMAGING MODALITIES OF THE SPINE

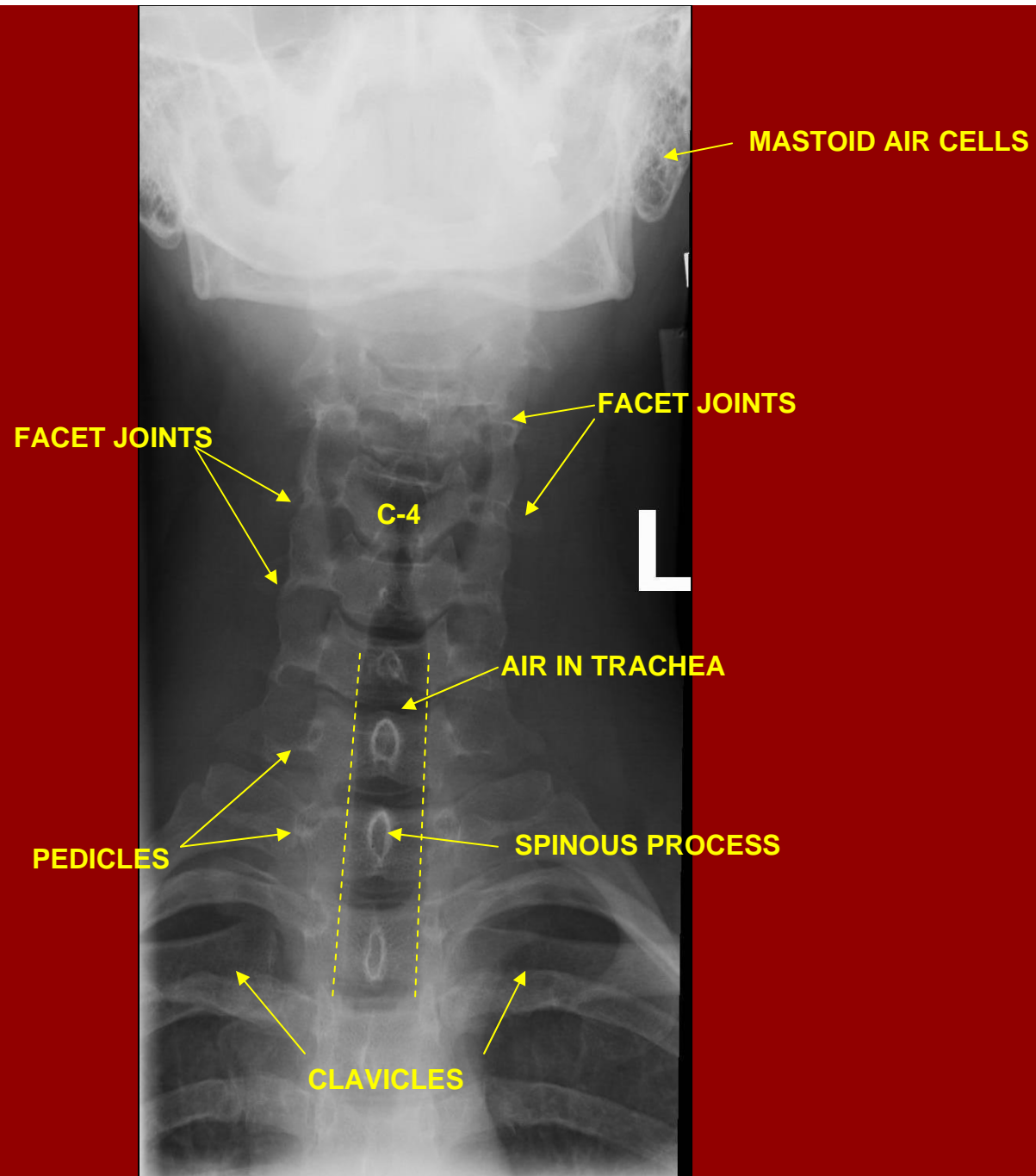
### CERVICAL SPINE IMAGES

- CERVICAL PLAIN FILMS
- CERVICAL MYELOGRAM
- CERVICAL CT
- CERVICAL MRI

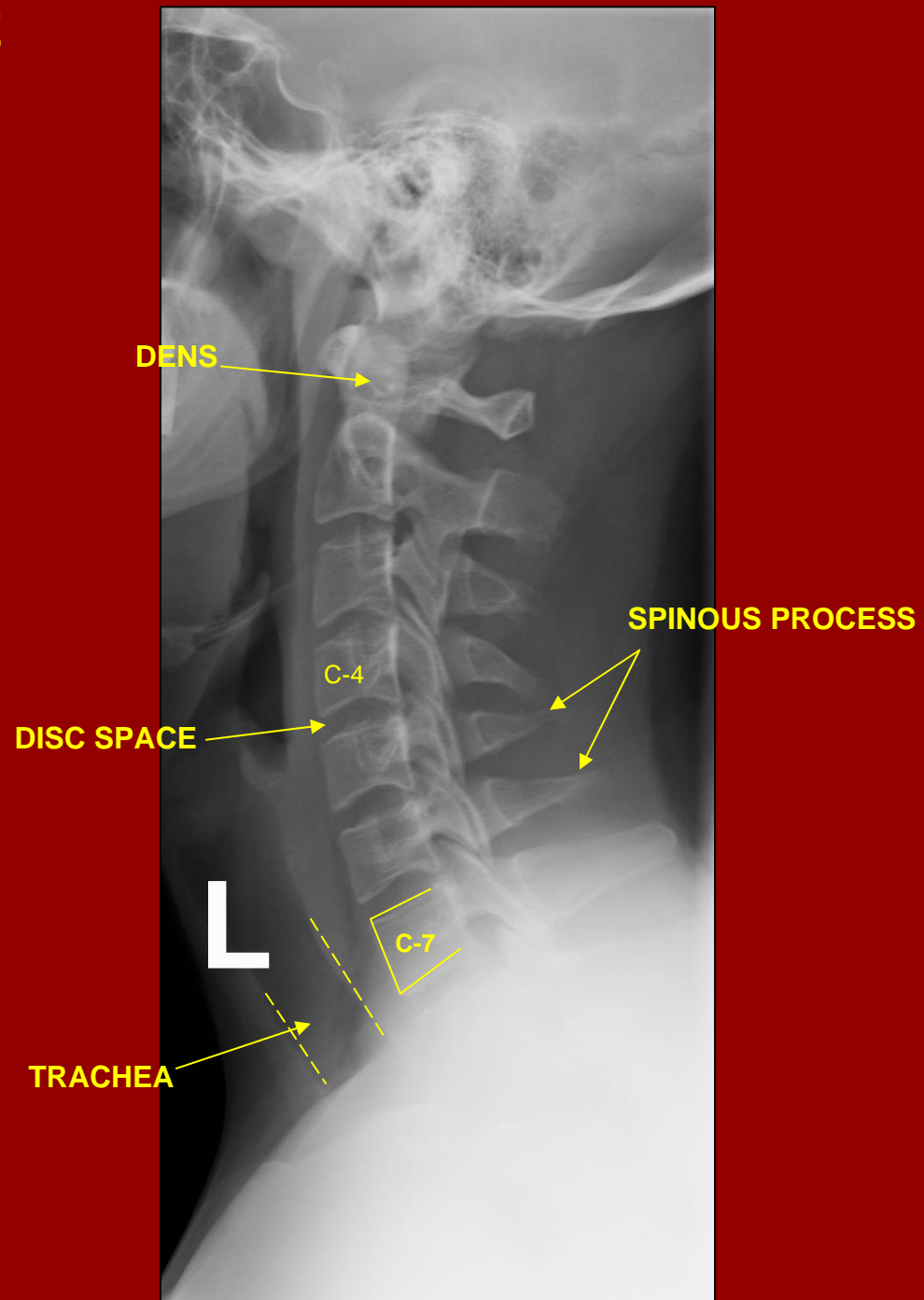


[www.fisiokinesiterapia.biz](http://www.fisiokinesiterapia.biz)

# CERVICAL SPINE "AP" VIEW



# CERVICAL SPINE LATERAL VIEW



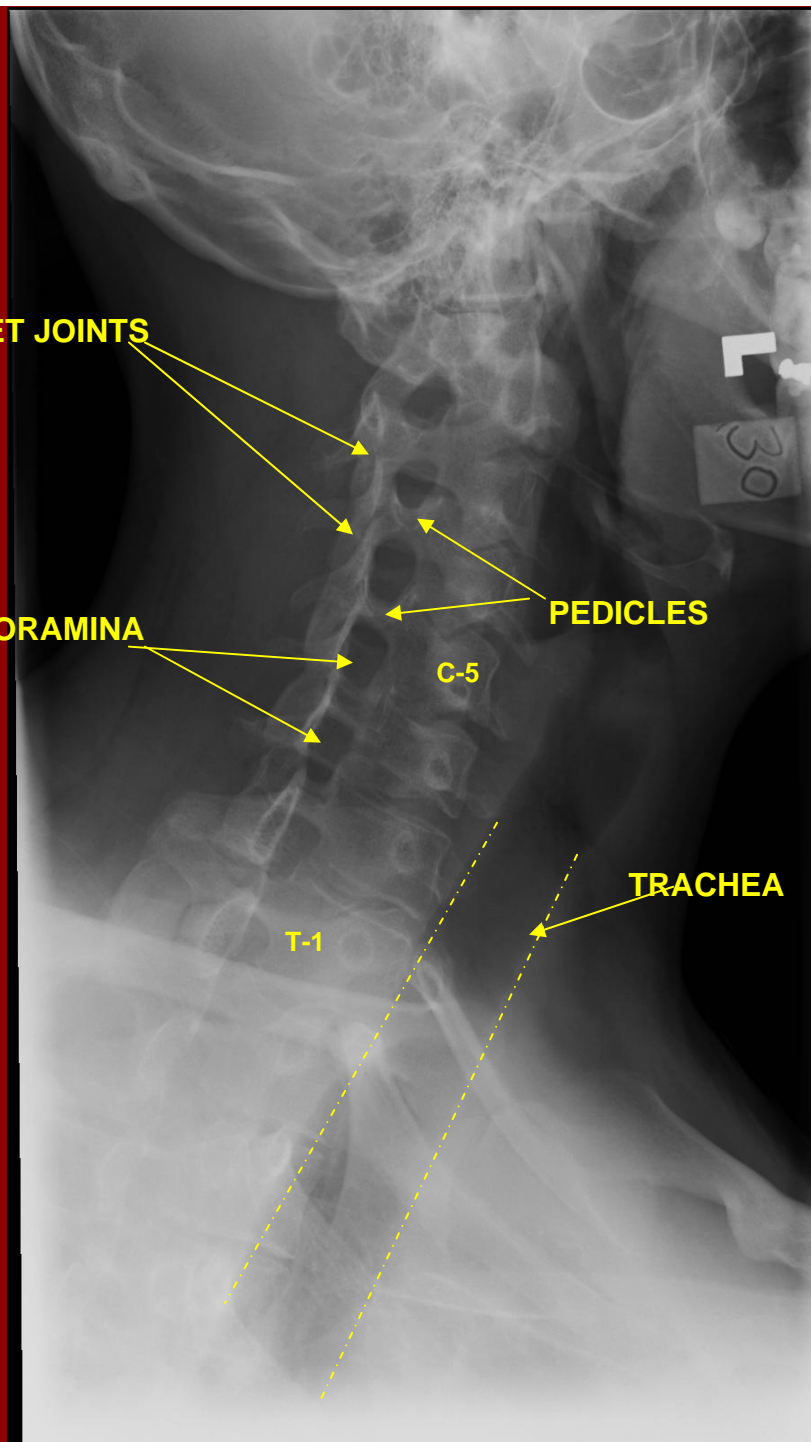
**CERVICAL SPINE  
OBLIQUE VIEW**

**FACET JOINTS**

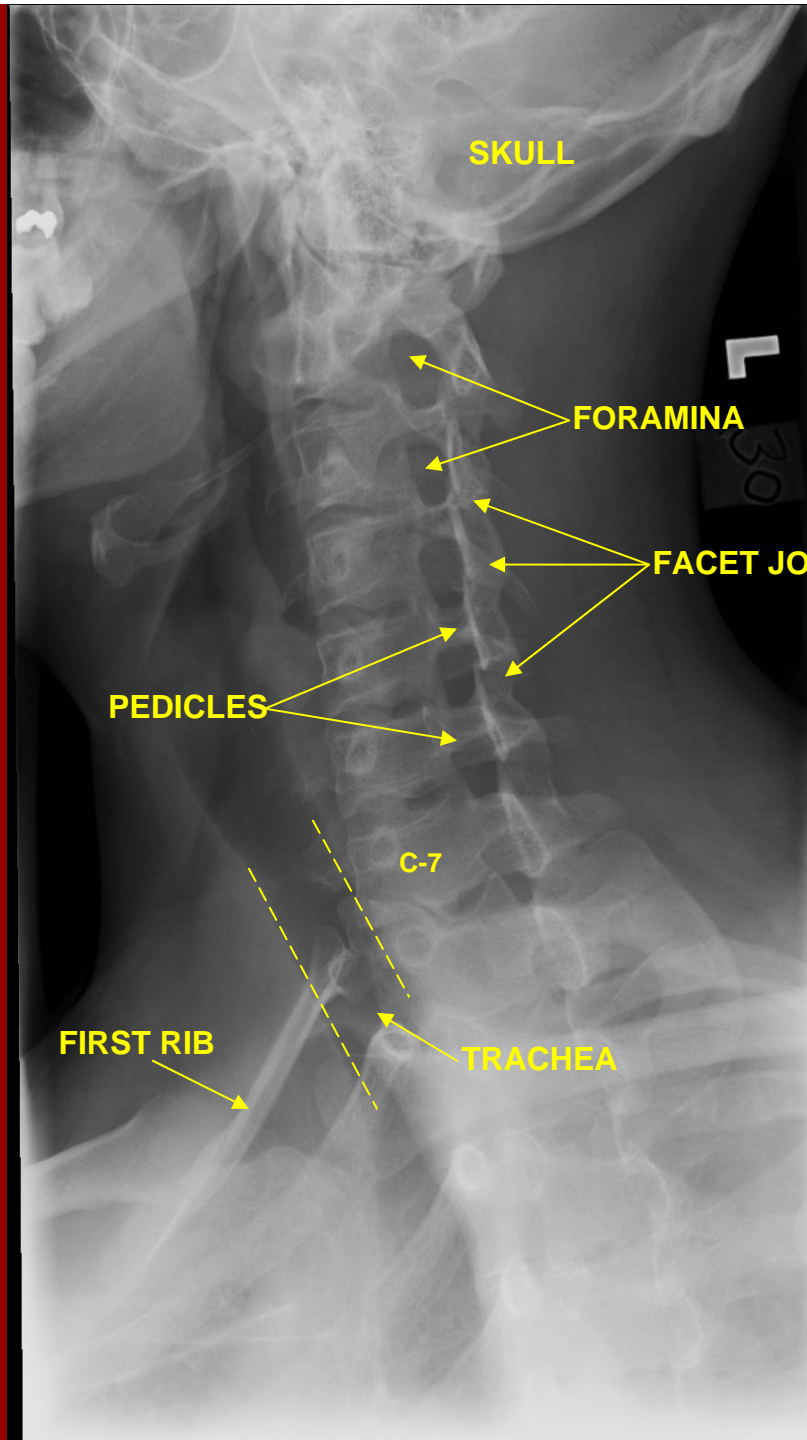
**FORAMINA**

**PEDICLES**

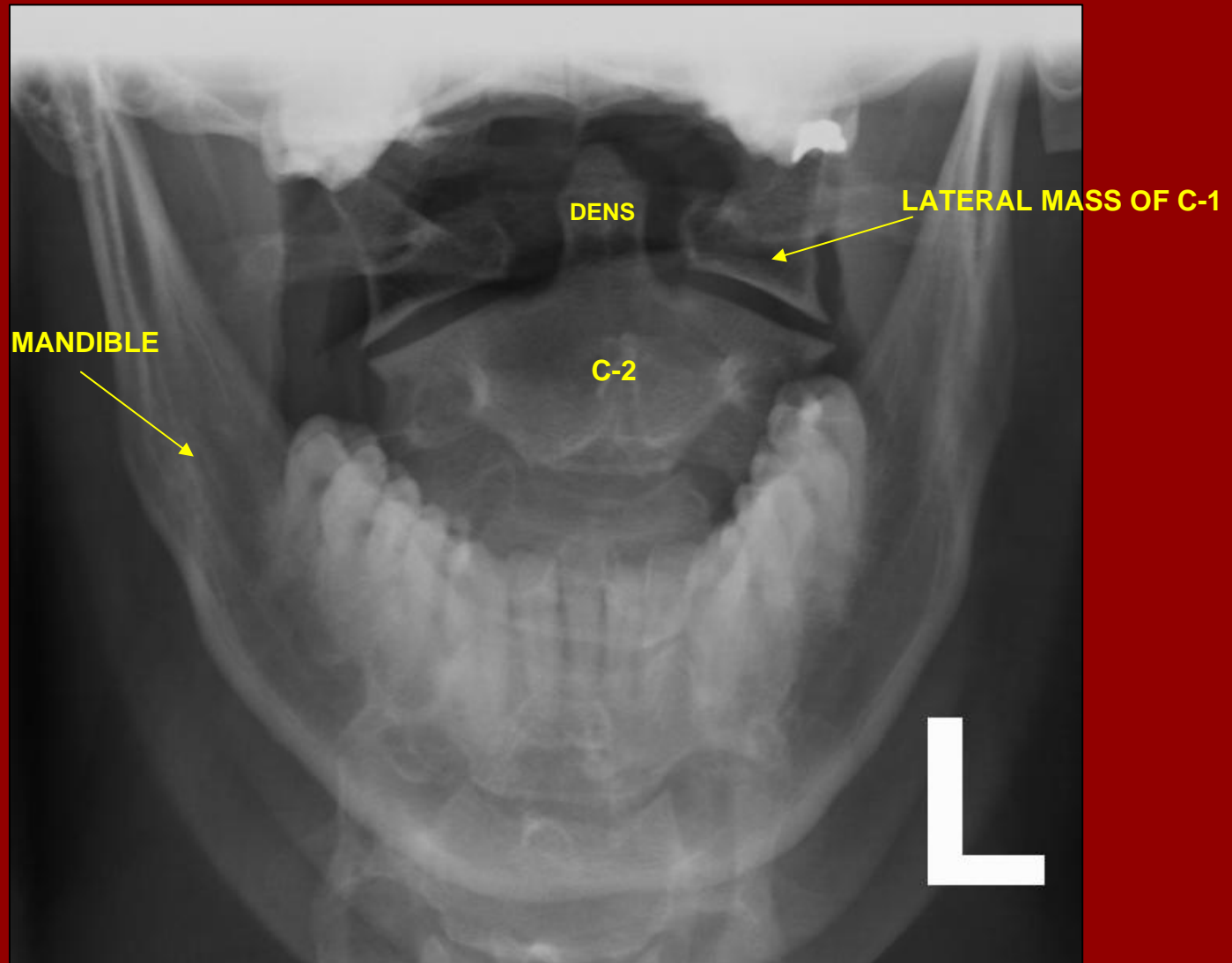
**TRACHEA**



**CERVICAL SPINE  
OBLIQUE VIEW**

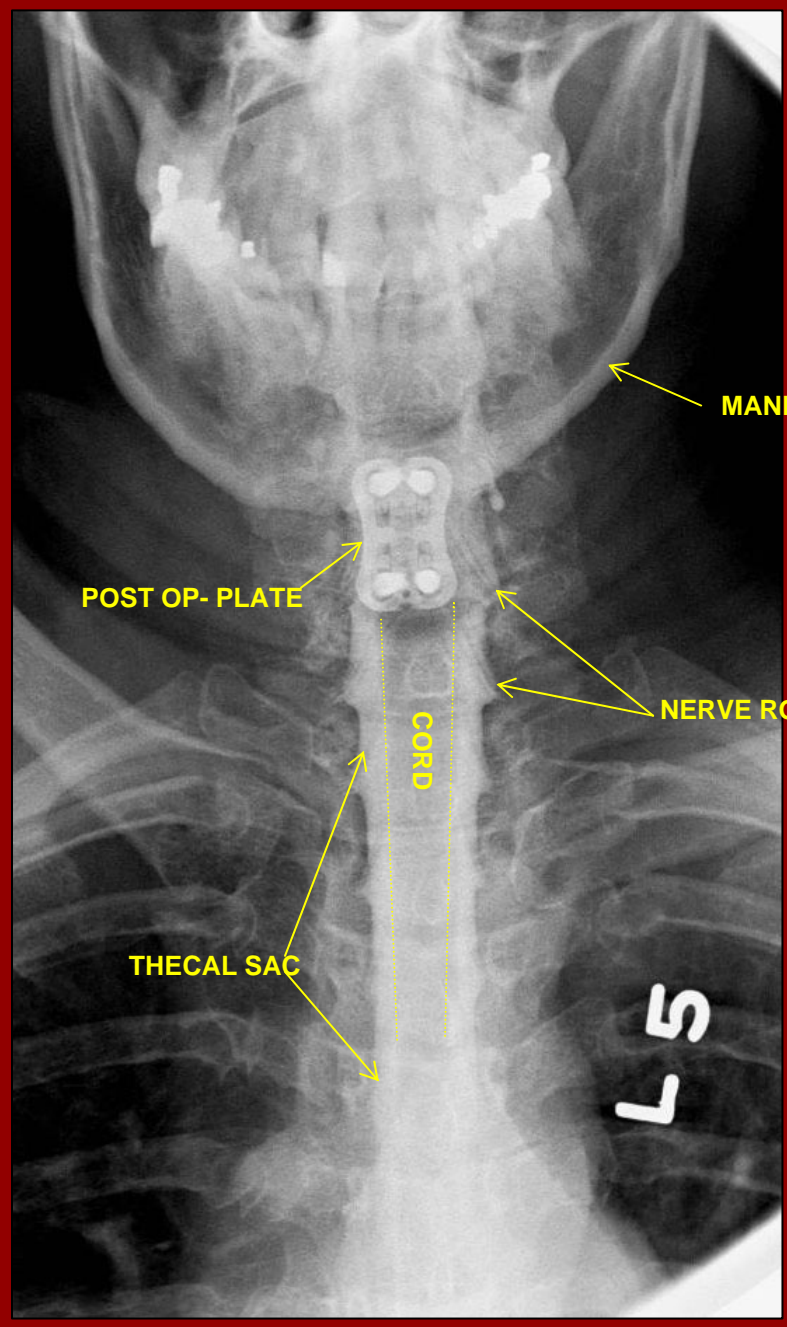


# “AP” ODONTIOD VIEW



# CERVICAL MYELOGRAM AP VIEW<sub>C</sub>

IODINATED CONTRAST IN THE THECAL SAC



MANDIBLE

POST OP- PLATE

CORD

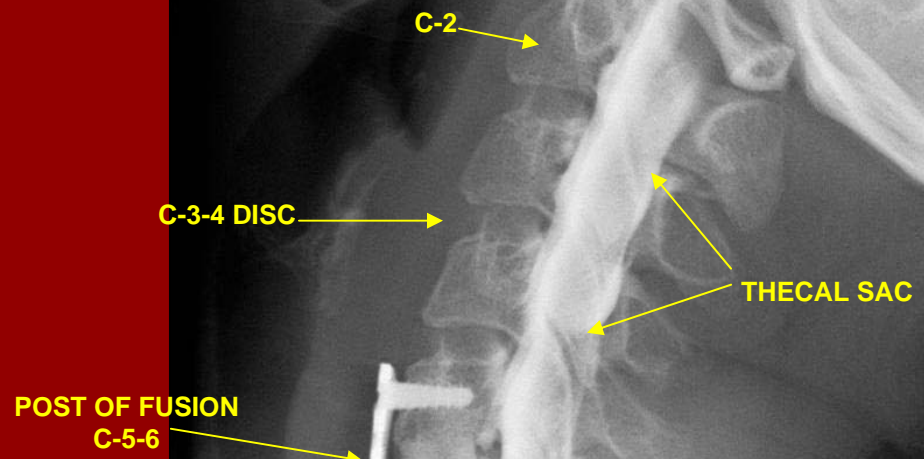
NERVE ROOTS

THECAL SAC

L5

# CERVICAL MYELOGRAM LATERAL VIEW

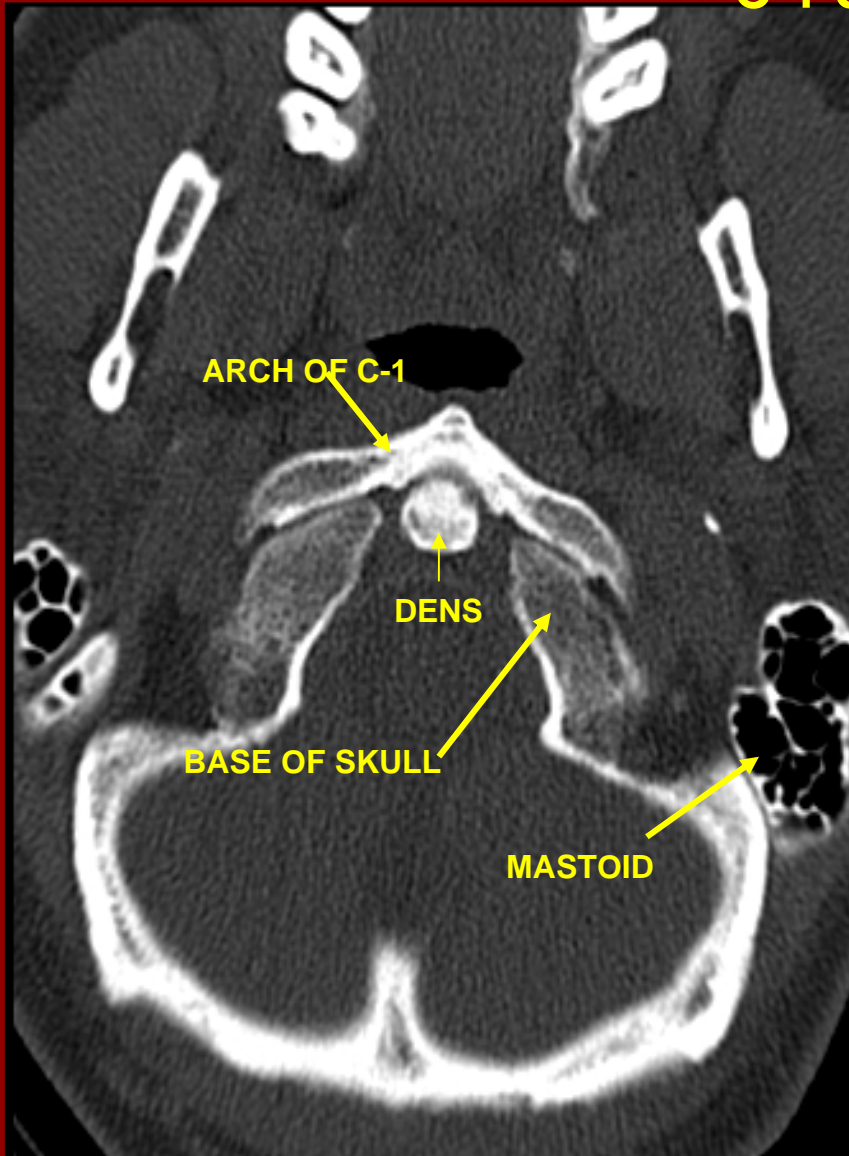
IODINATED CONTRAST  
IN THECAL SAC



L5



# CT- CERVICAL SPINE C-1 SECTION

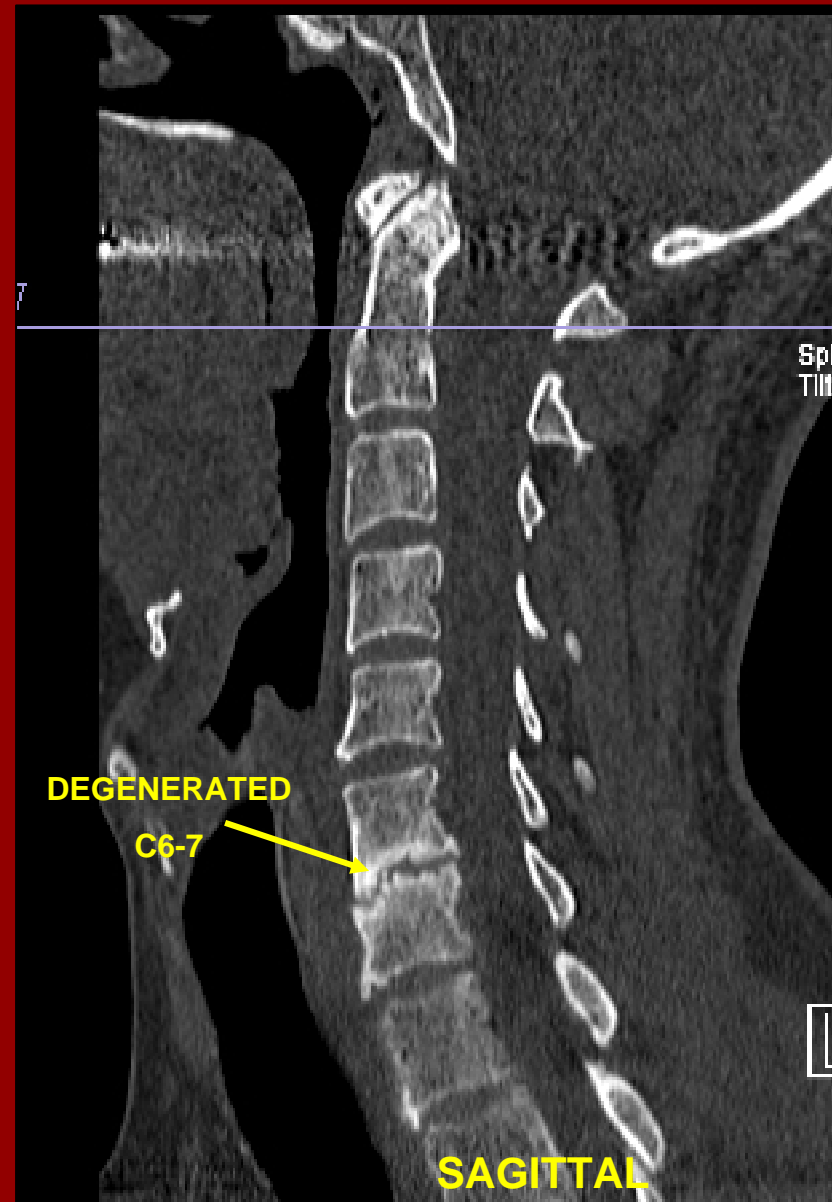
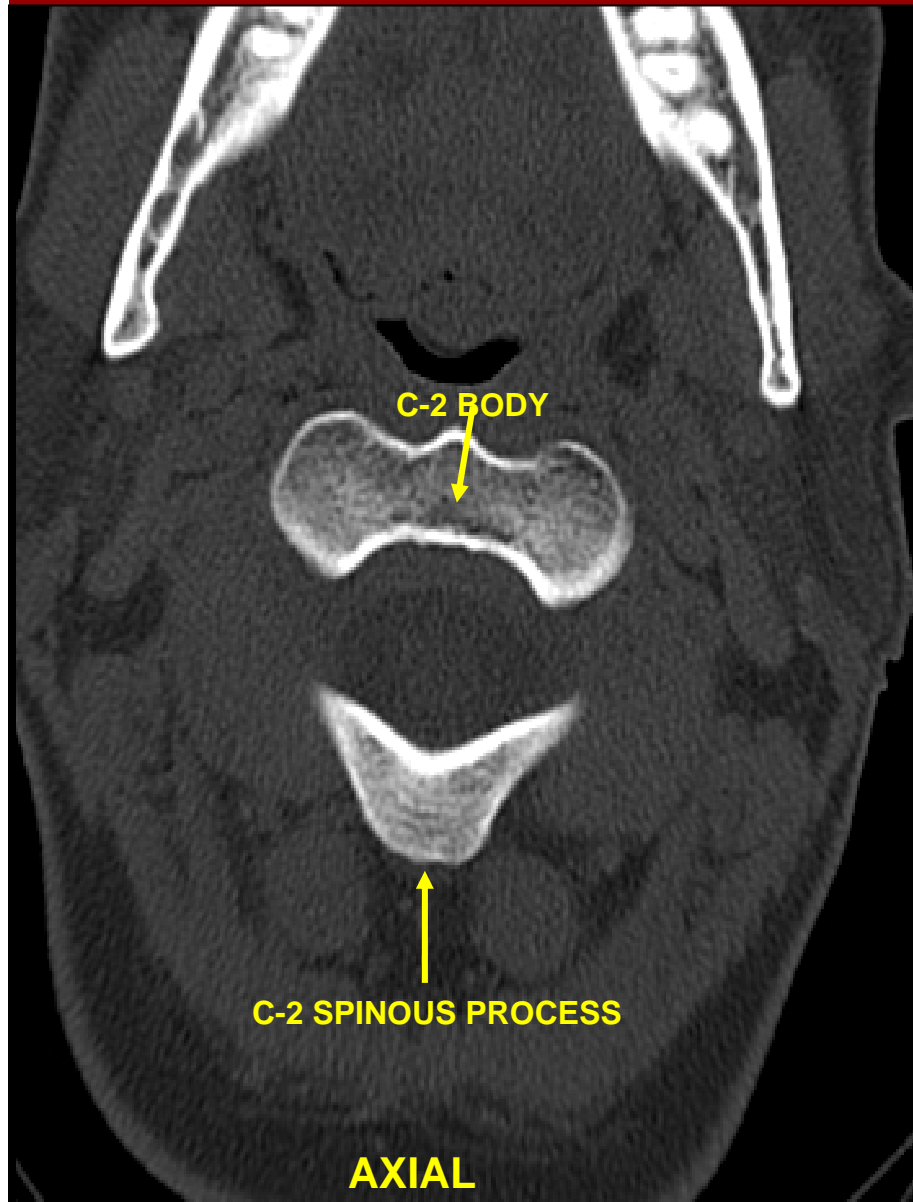


AXIAL



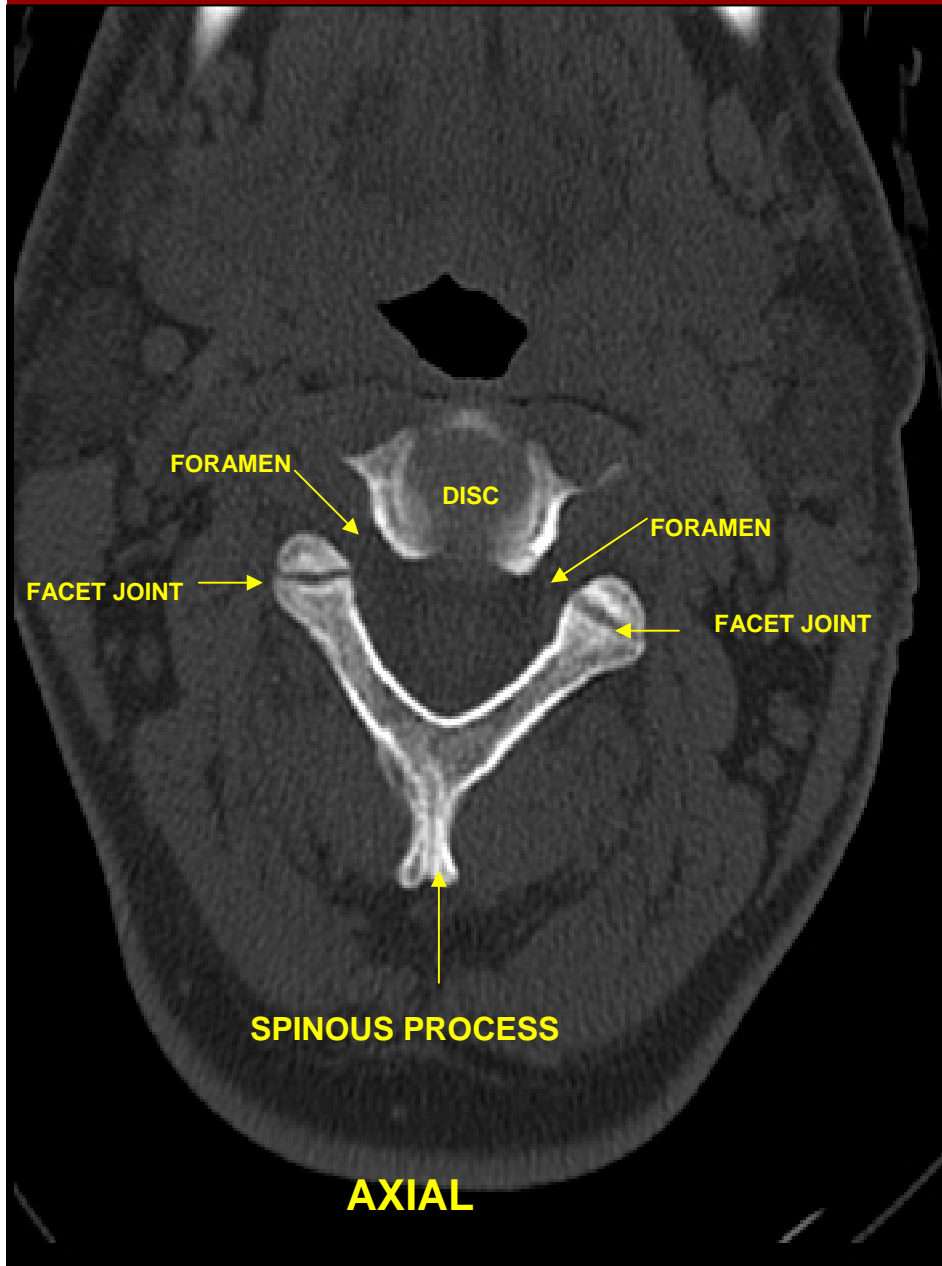
SAGITTAL

# CT-- CERVICAL SPINE C-2 SECTION



# CT- CERVICAL SPINE

## C2-3 INTERVERTEBRAL DISC



**CT- CERVICAL SPINE  
C- 3 SECTION**

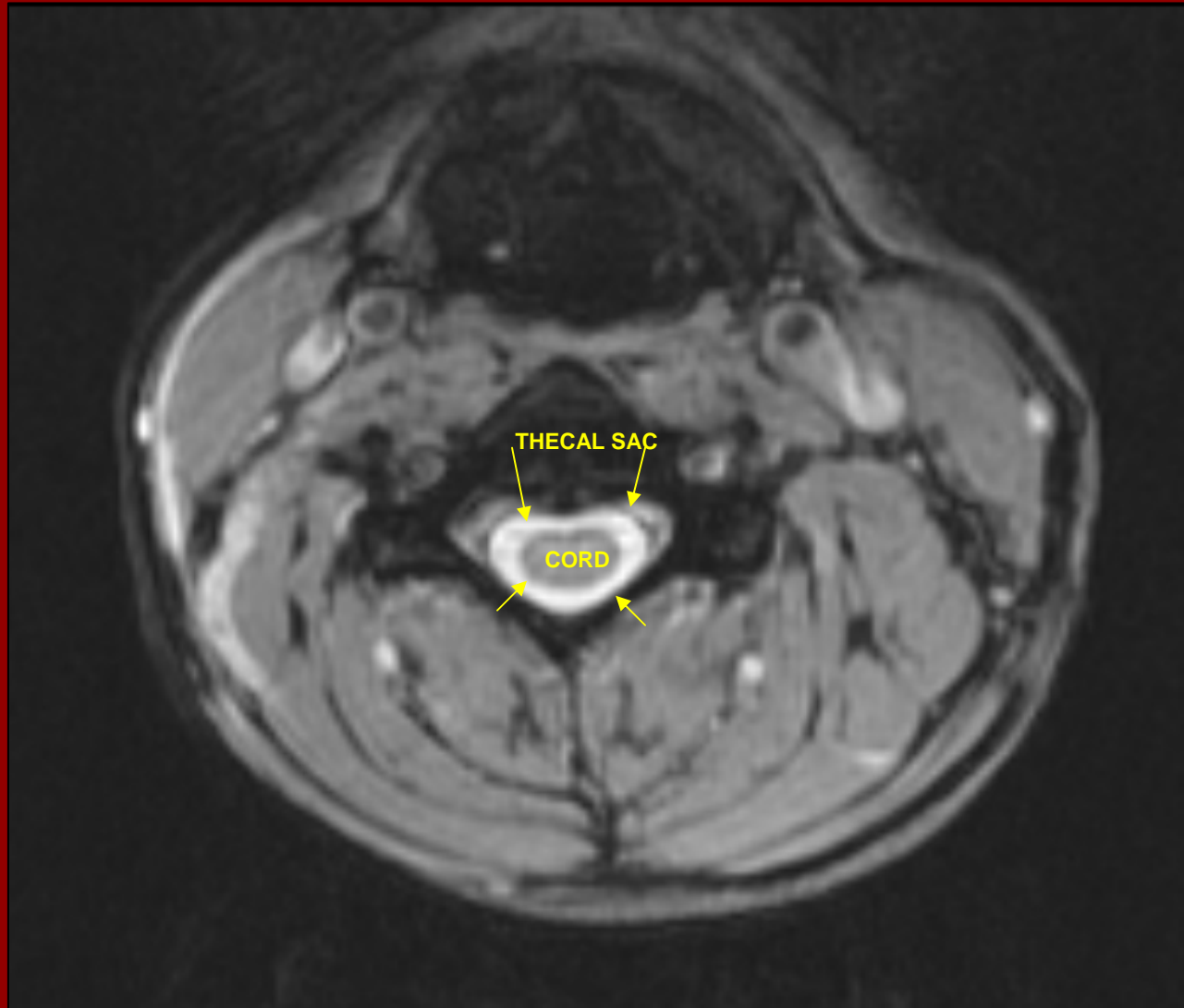


**AXIAL**

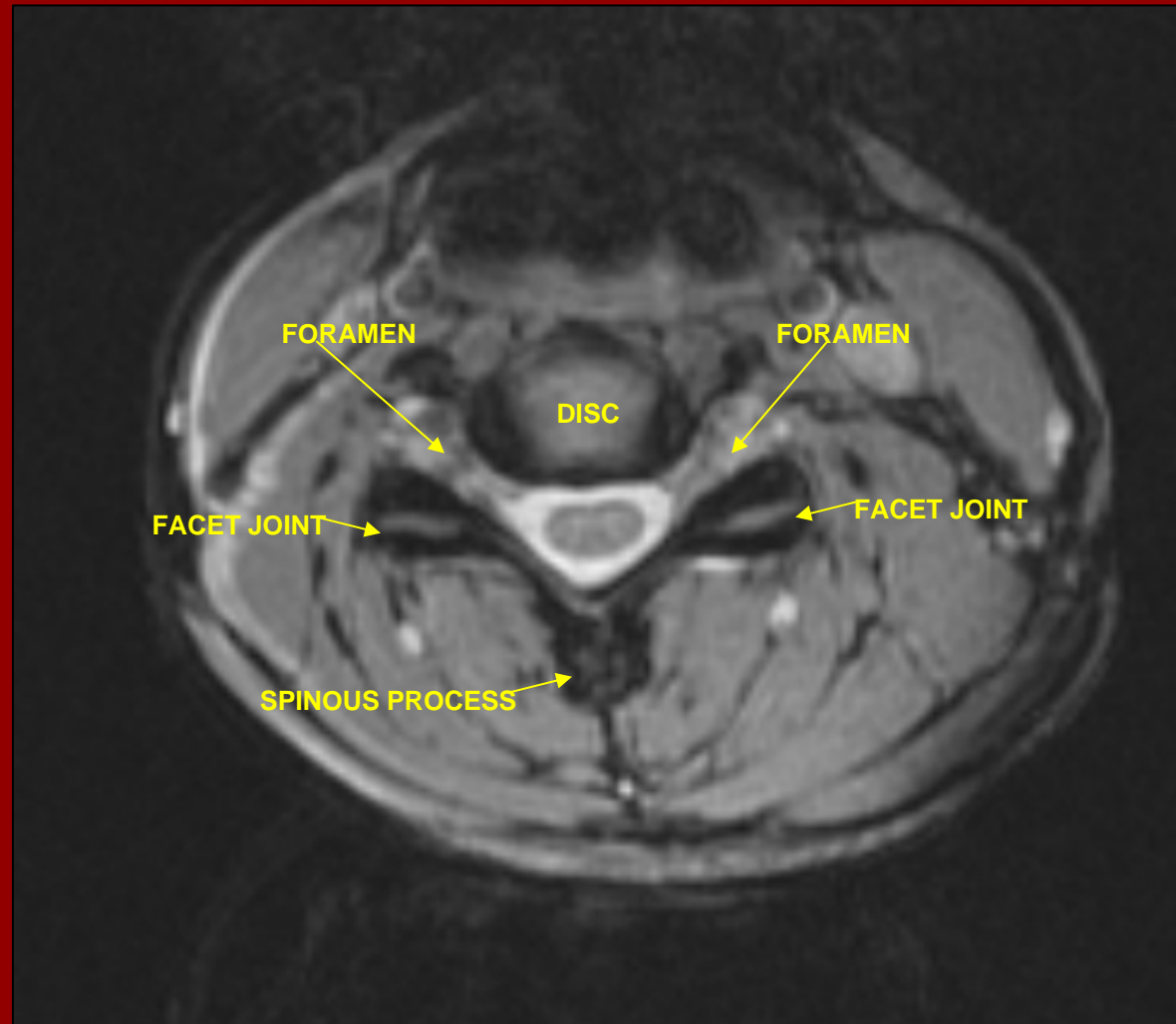


**SAGITTAL**

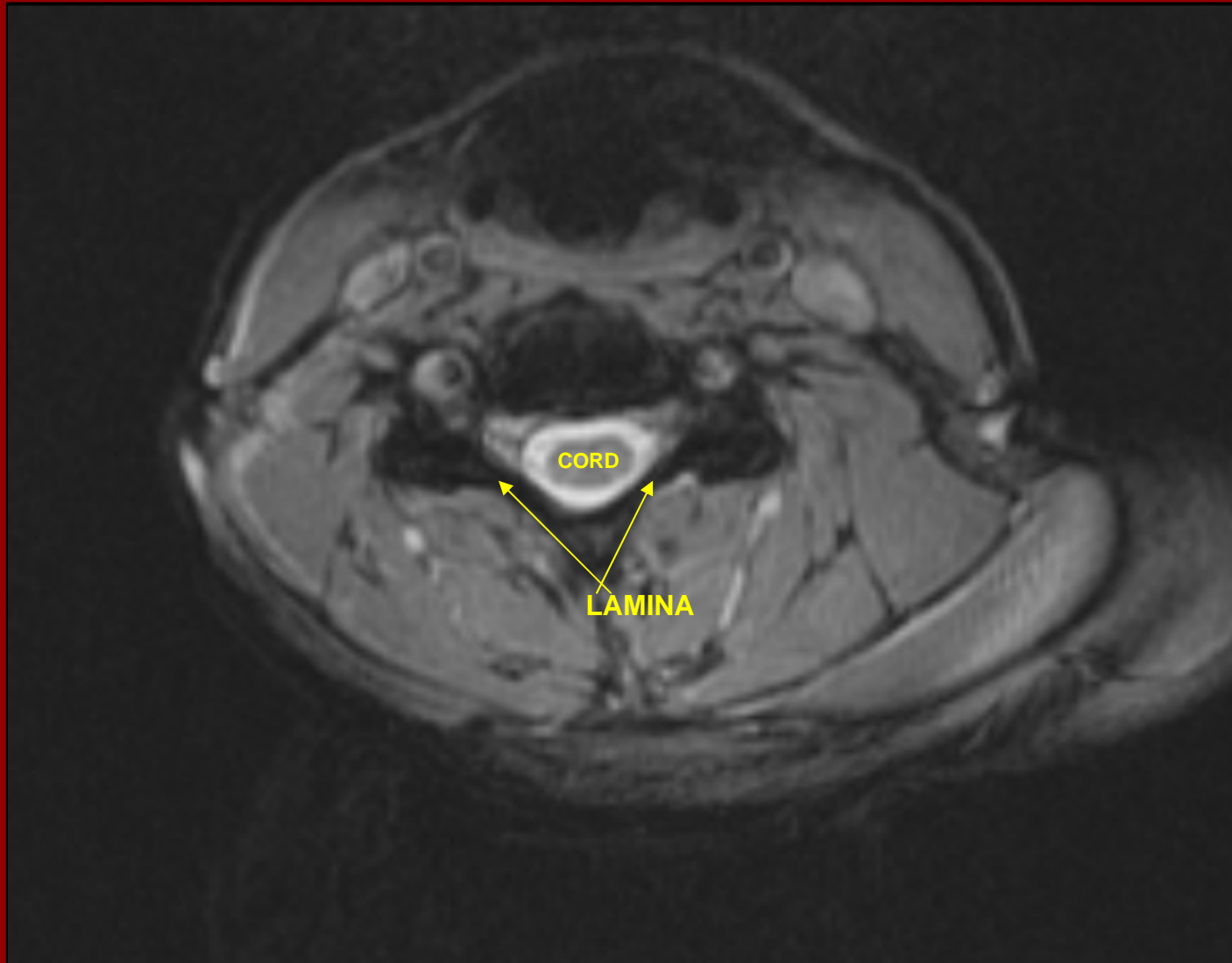
**MRI- CERVICAL SPINE  
AXIAL**



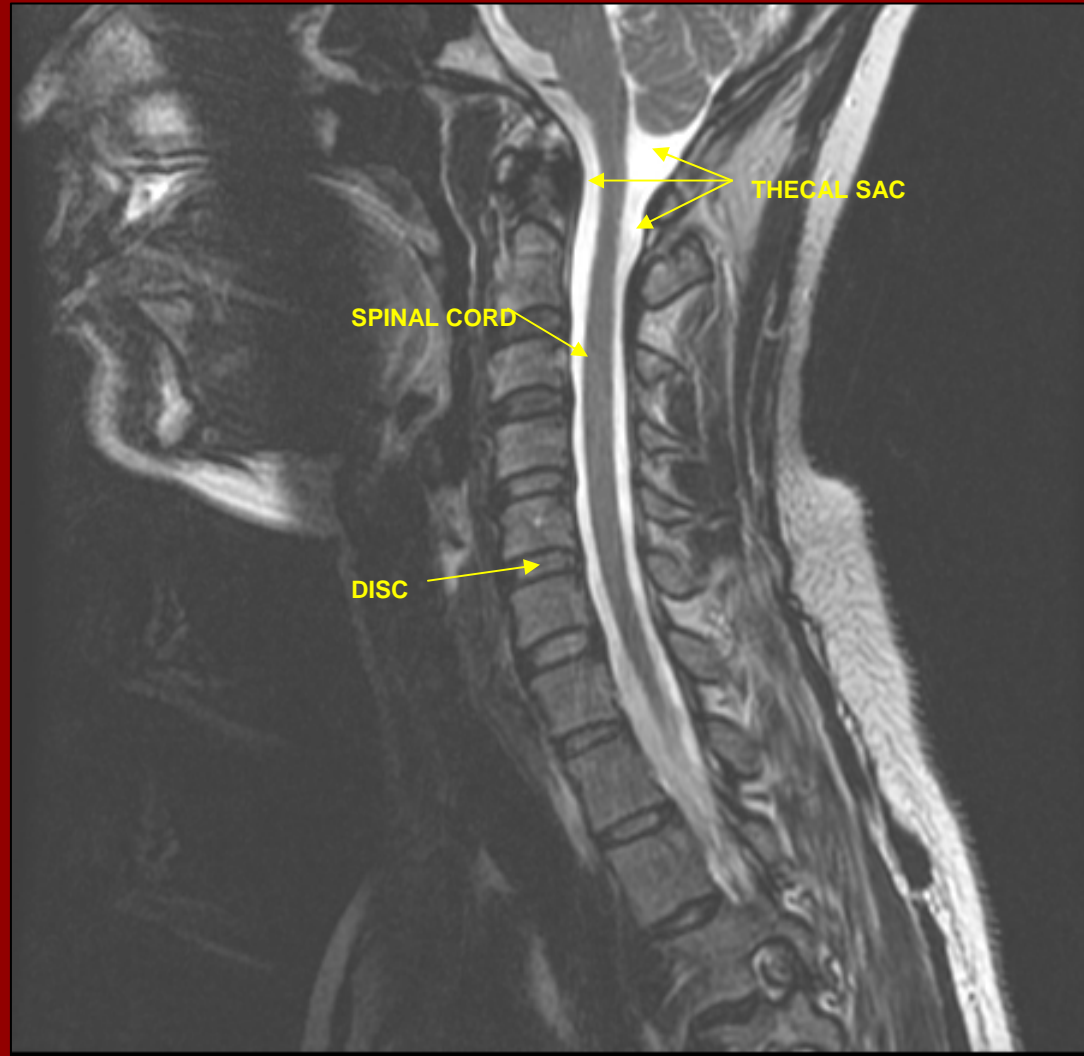
## MRI- CERVICAL SPINE AXIAL



**MRI CERVICAL SPINE  
AXIAL**



**MRI—CERVICAL SPINE**  
SAGITTAL-midline

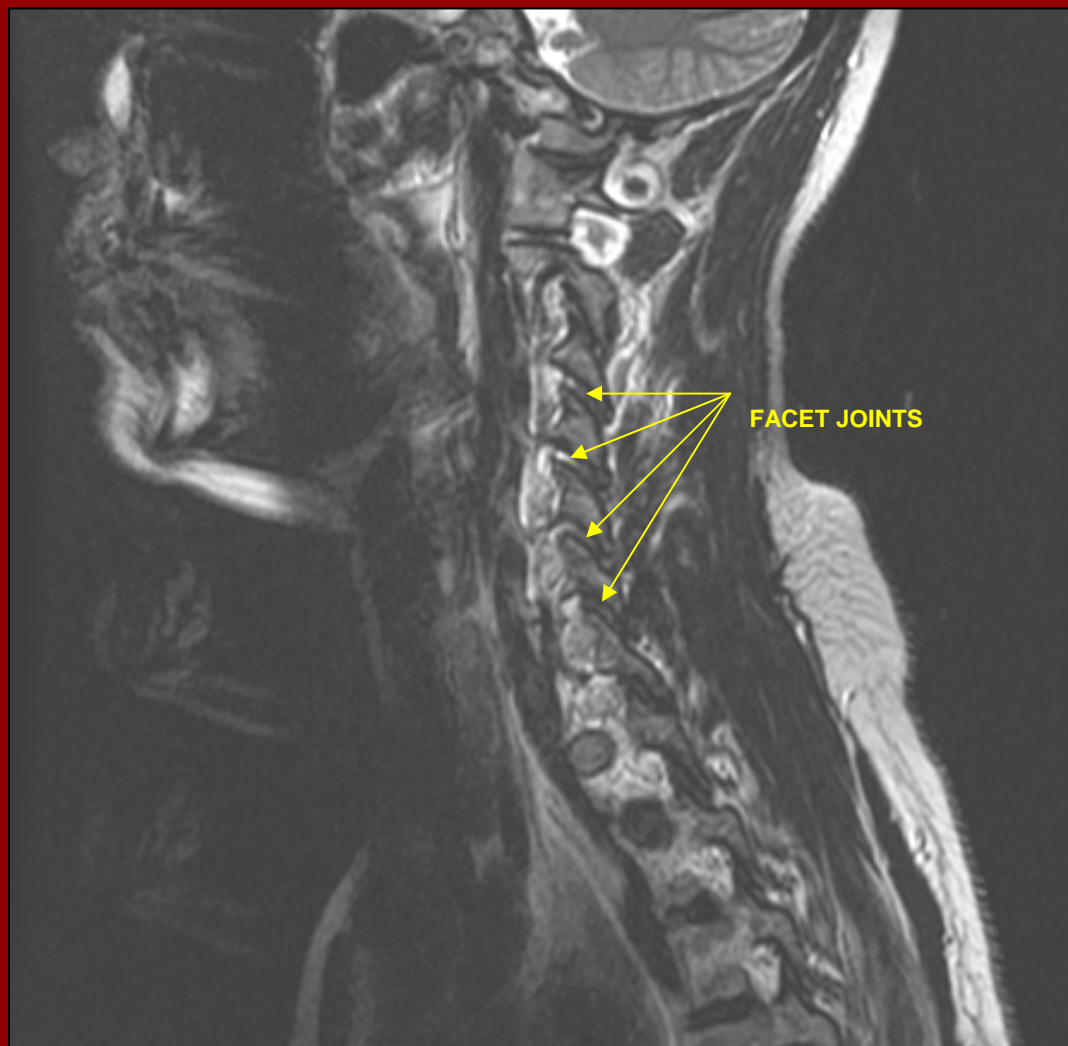




**MRI- CERVICAL SPINE**  
**SAGITTAL-midline**



**MRI—CERVICAL SPINE**  
**SAGITTAL-lateral**

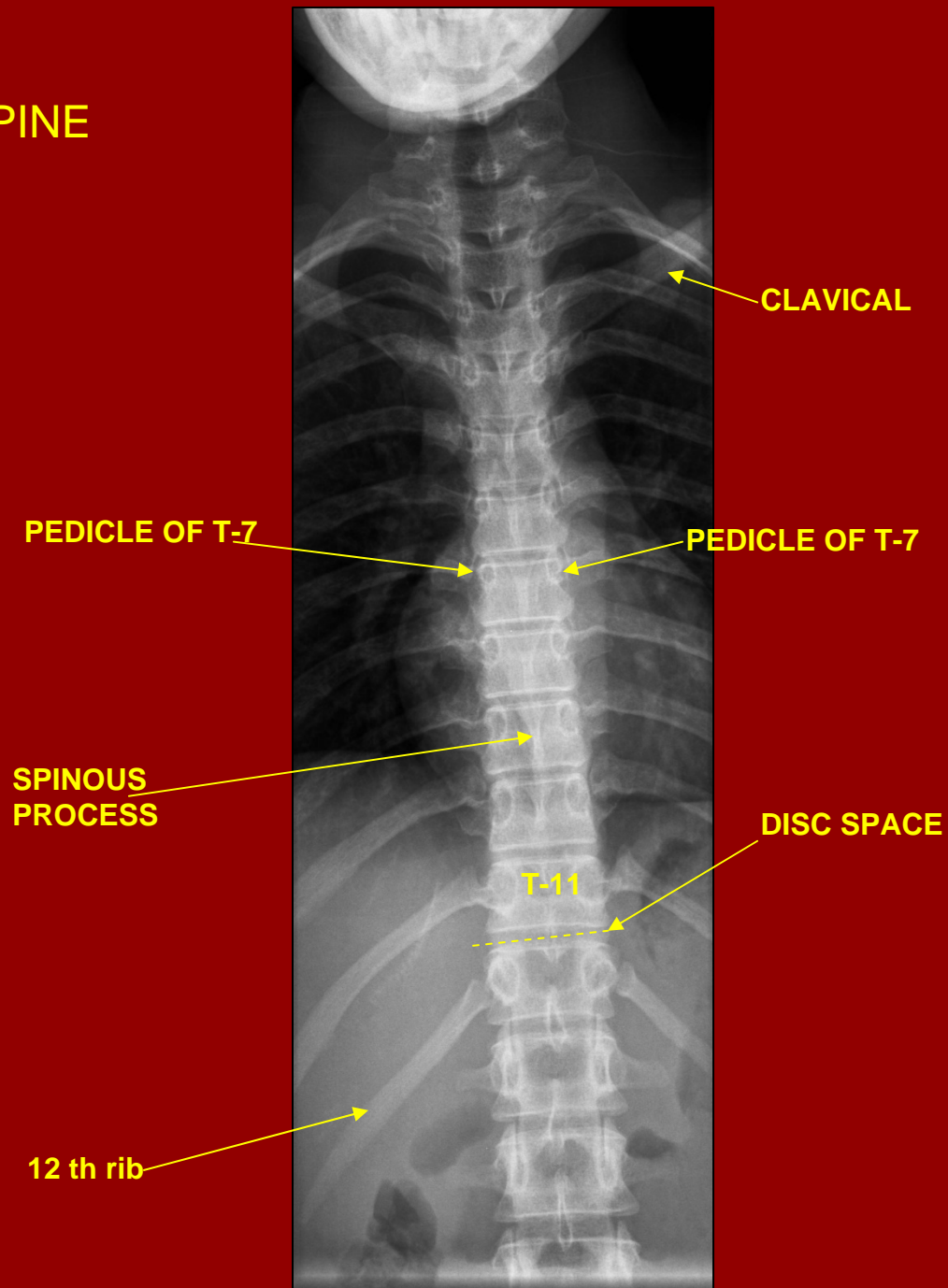


# THORACIC SPINE IMAGES

- THORACIC PLAIN FILMS



# THORACIC SPINE AP VIEW



**LATERAL  
THORACIC SPINE**

**CLAVICAL**

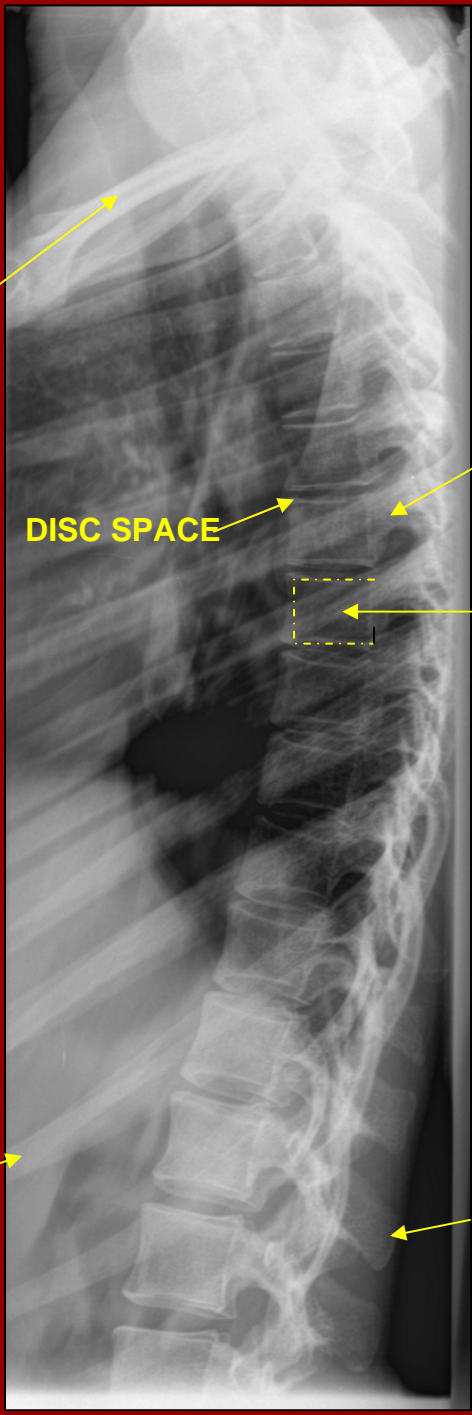
**DISC SPACE**

**RIB**

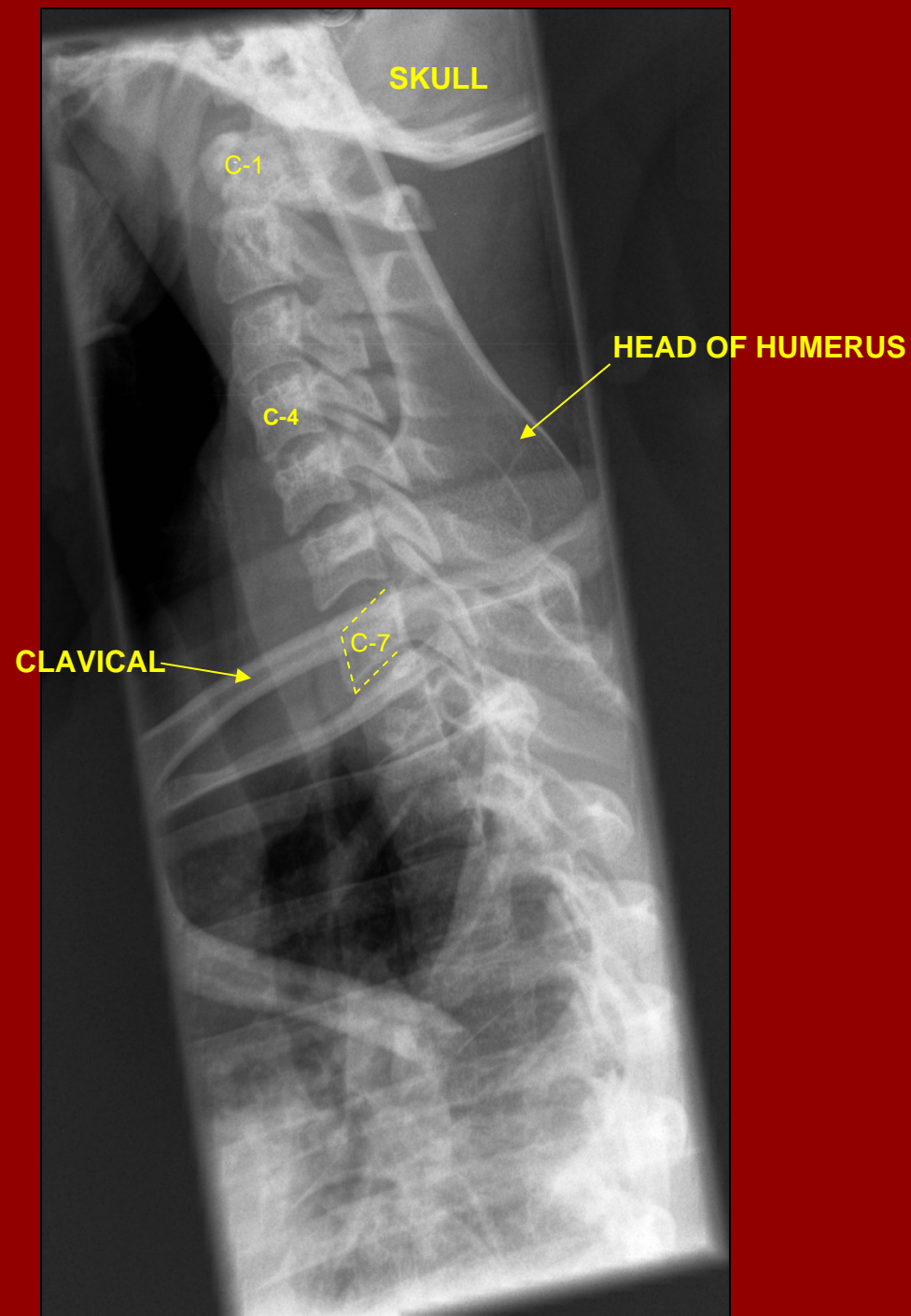
**PEDICLE**

**VERTEBRAL BODY**

**SPINOUS PROCESS**



# THORACIC SPINE SWIMMERS VIEW

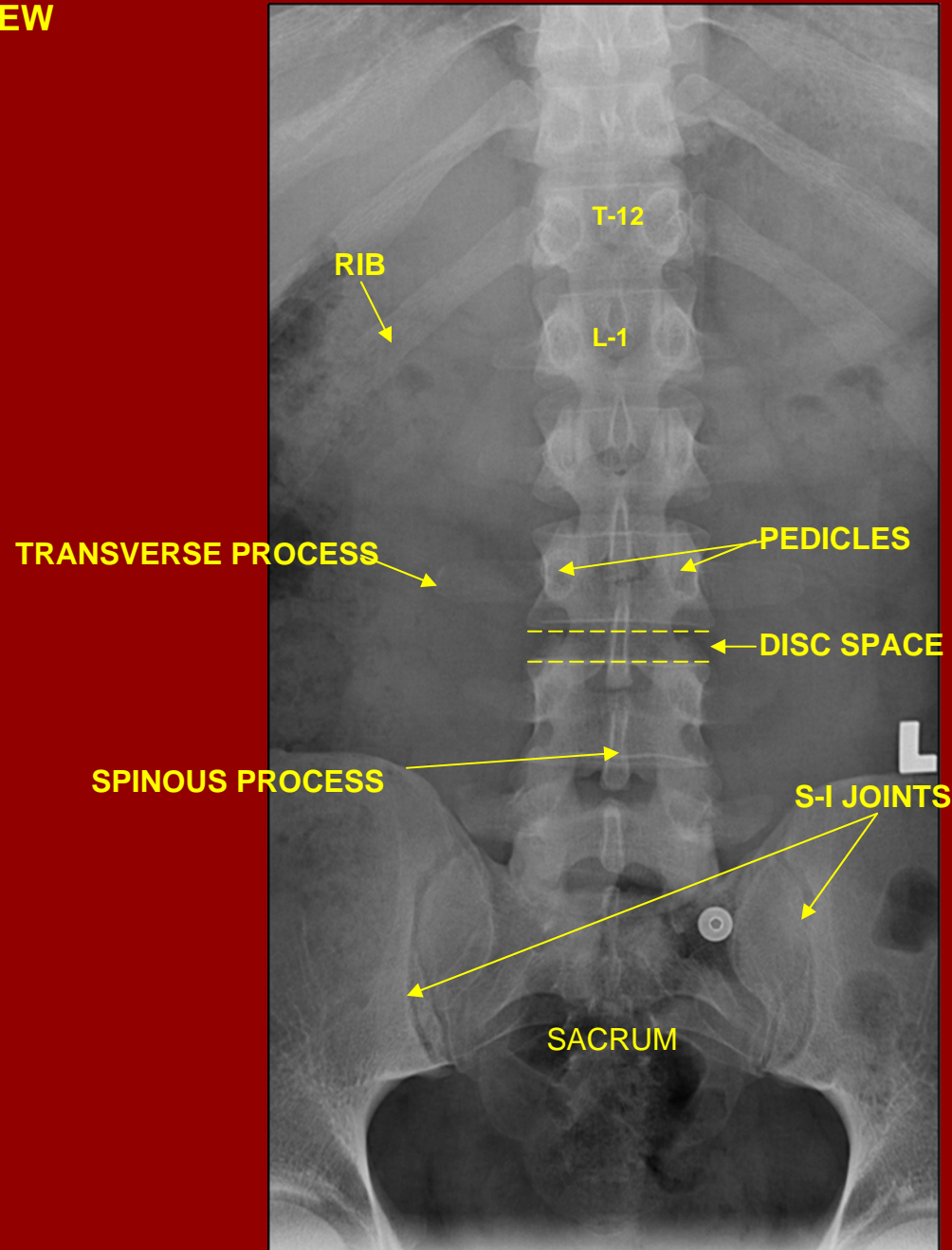


# LUMBAR SPINE IMAGES

- LUMBAR PLAIN FILMS
- LUMBAR MYELOGRAM
- LUMBAR CT— POST MYELOGRAM
- LUMBAR MRI

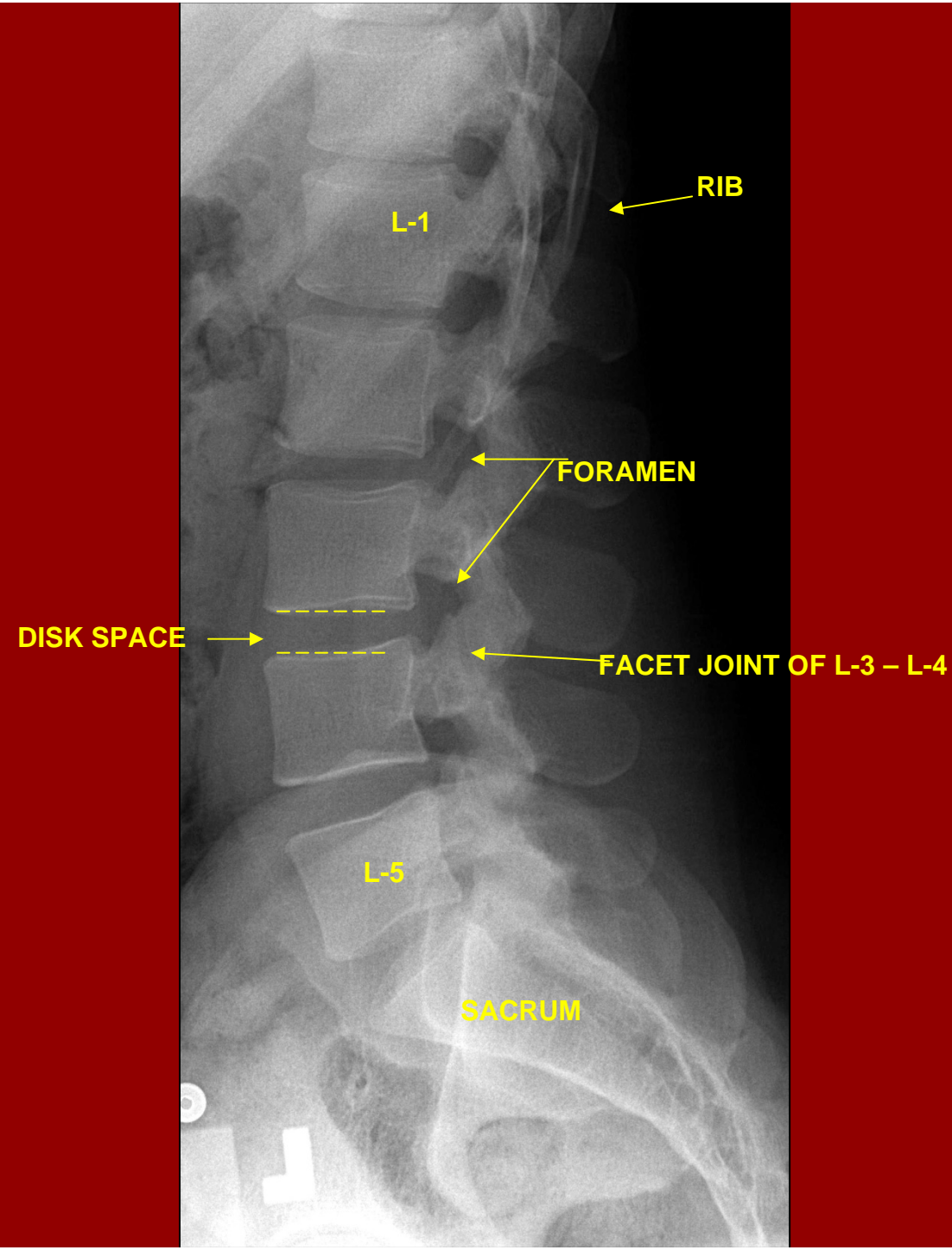


# LUMBAR SPINE AP VIEW

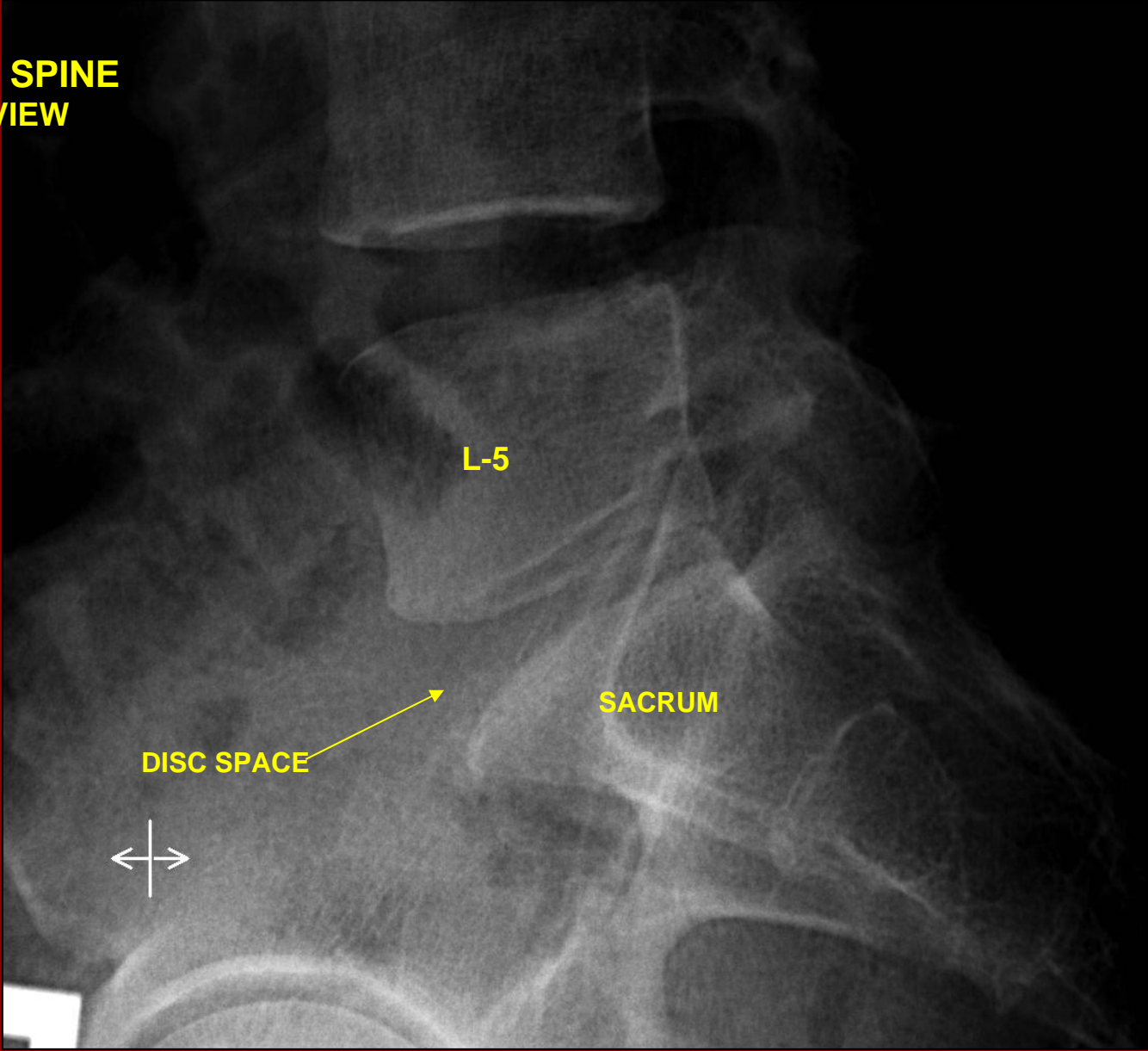




**LUMBAR SPINE  
LATERAL VIEW**

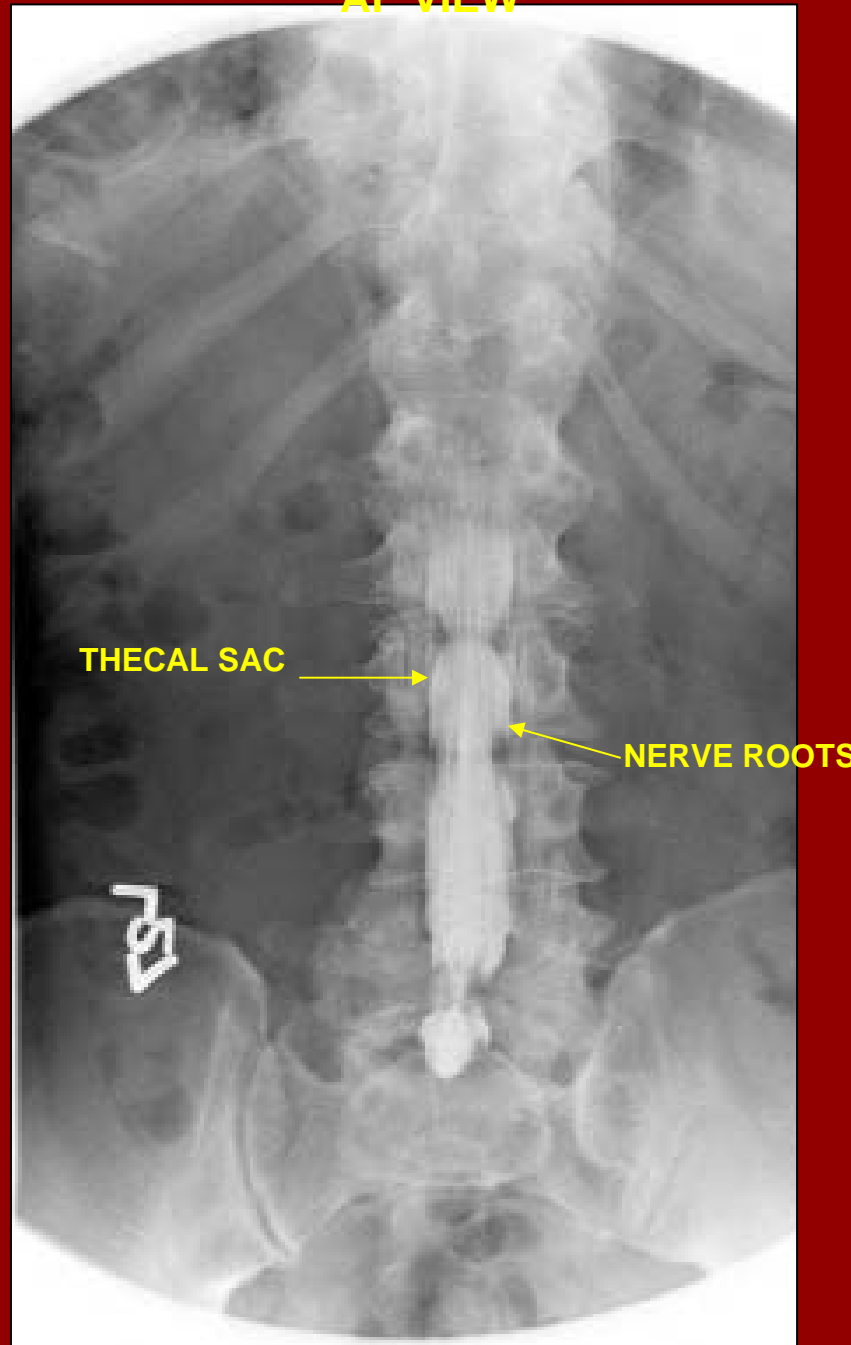


**LUMBAR SPINE  
SPOT VIEW**



**LUMBAR MYELOGRAM  
AP VIEW**

**IODINATED  
CONTRAST IN  
THECAL SAC**

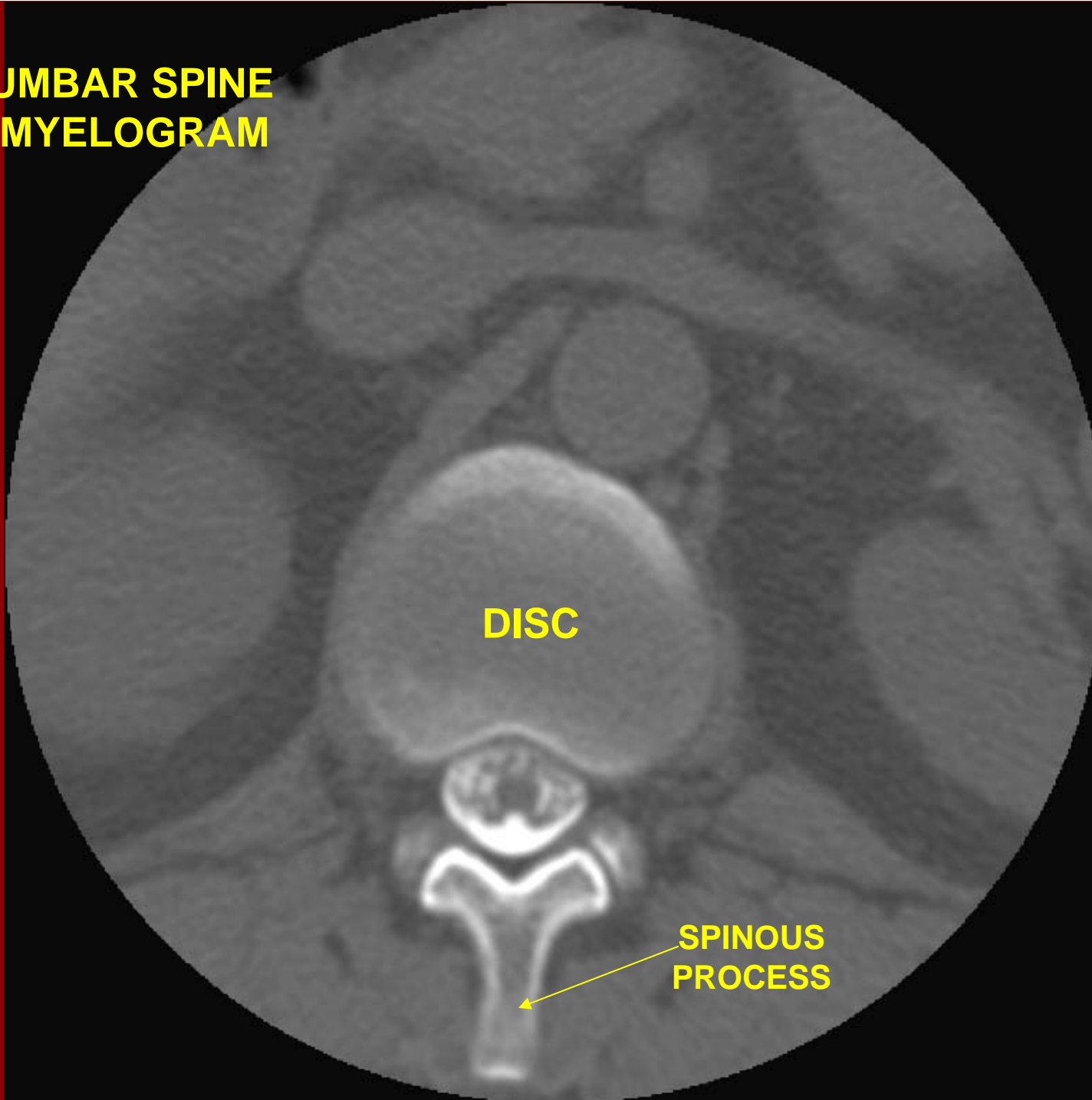


## LUMBAR MYELOGRAM LATERAL VIEW

IODINATED  
CONTRAST IN  
THECAL SAC



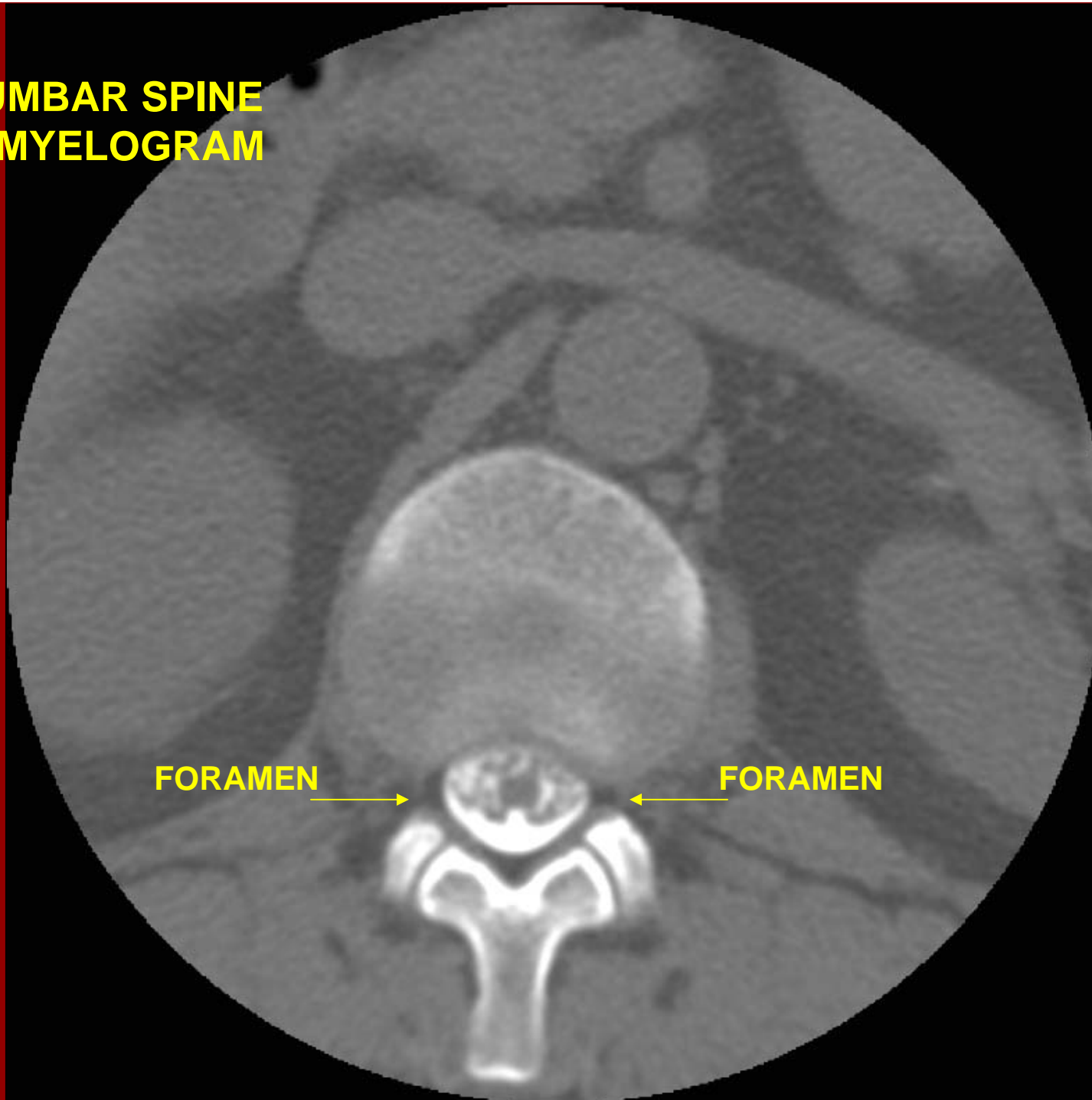
**CT- LUMBAR SPINE  
POST MYELOGRAM**



**DISC**

**SPINOUS  
PROCESS**

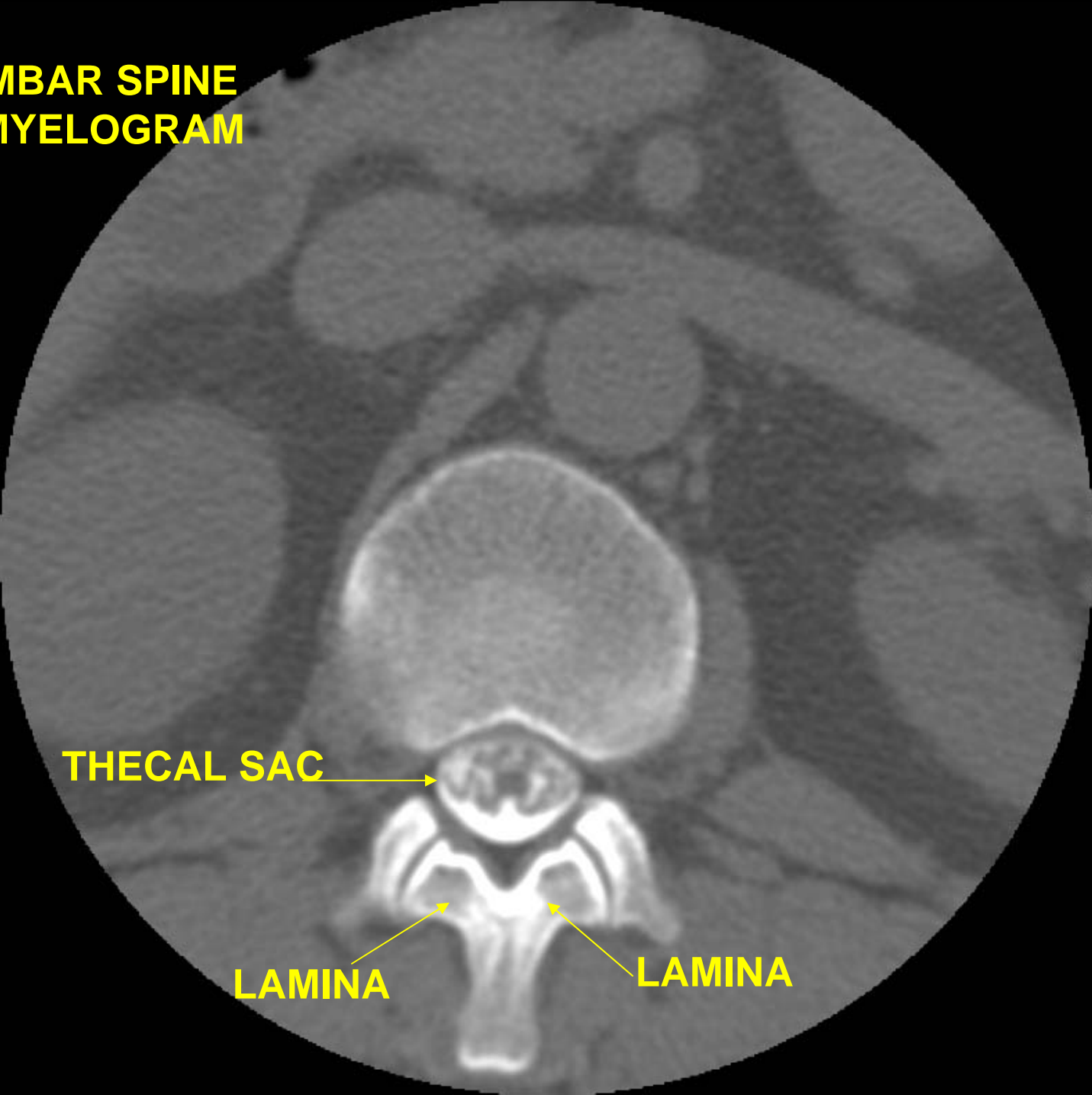
**CT- LUMBAR SPINE  
POST MYELOGRAM**



**FORAMEN**

**FORAMEN**

**CT-LUMBAR SPINE  
POST MYELOGRAM**

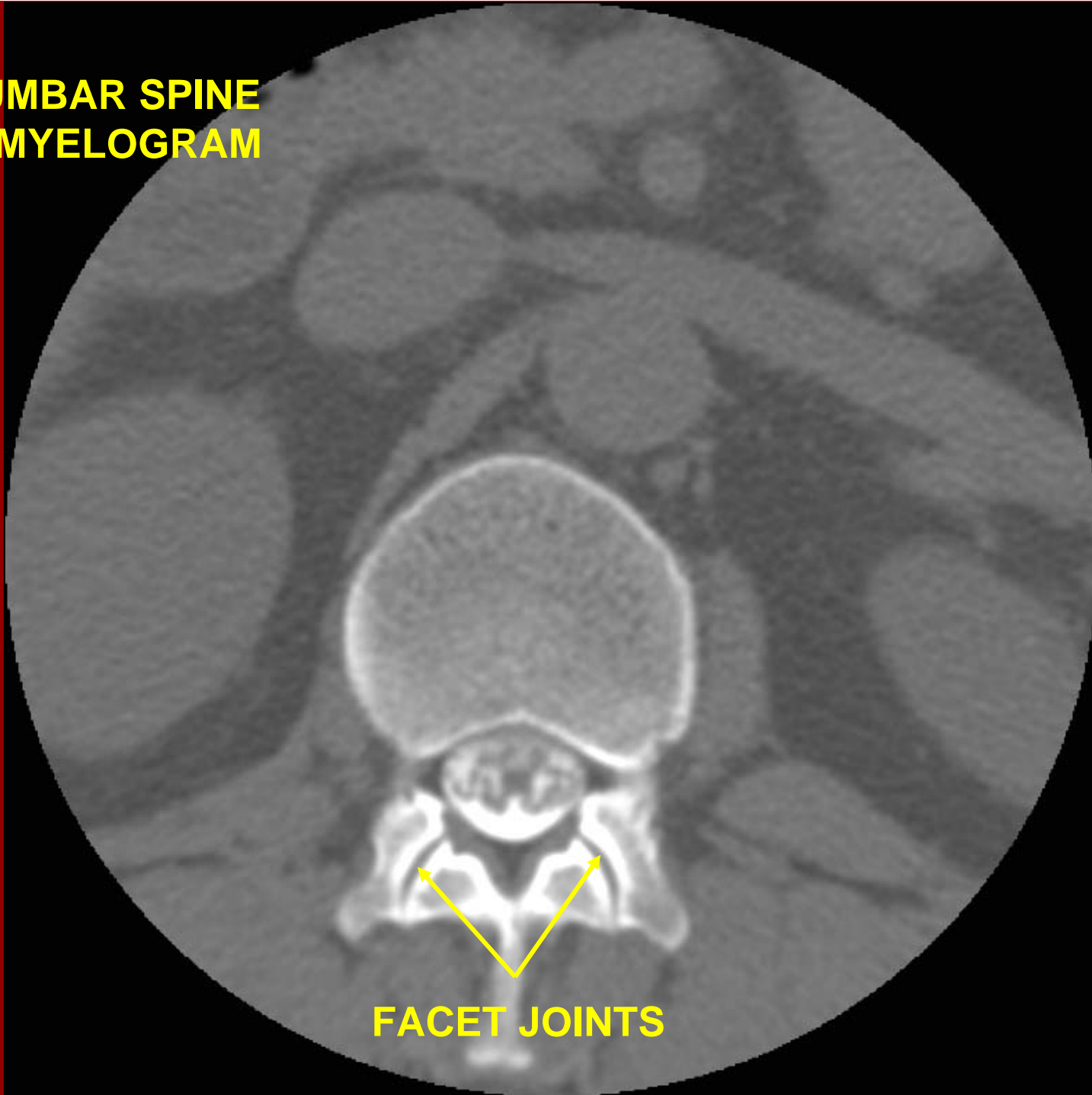


**THECAL SAC** →

→ **LAMINA**

→ **LAMINA**

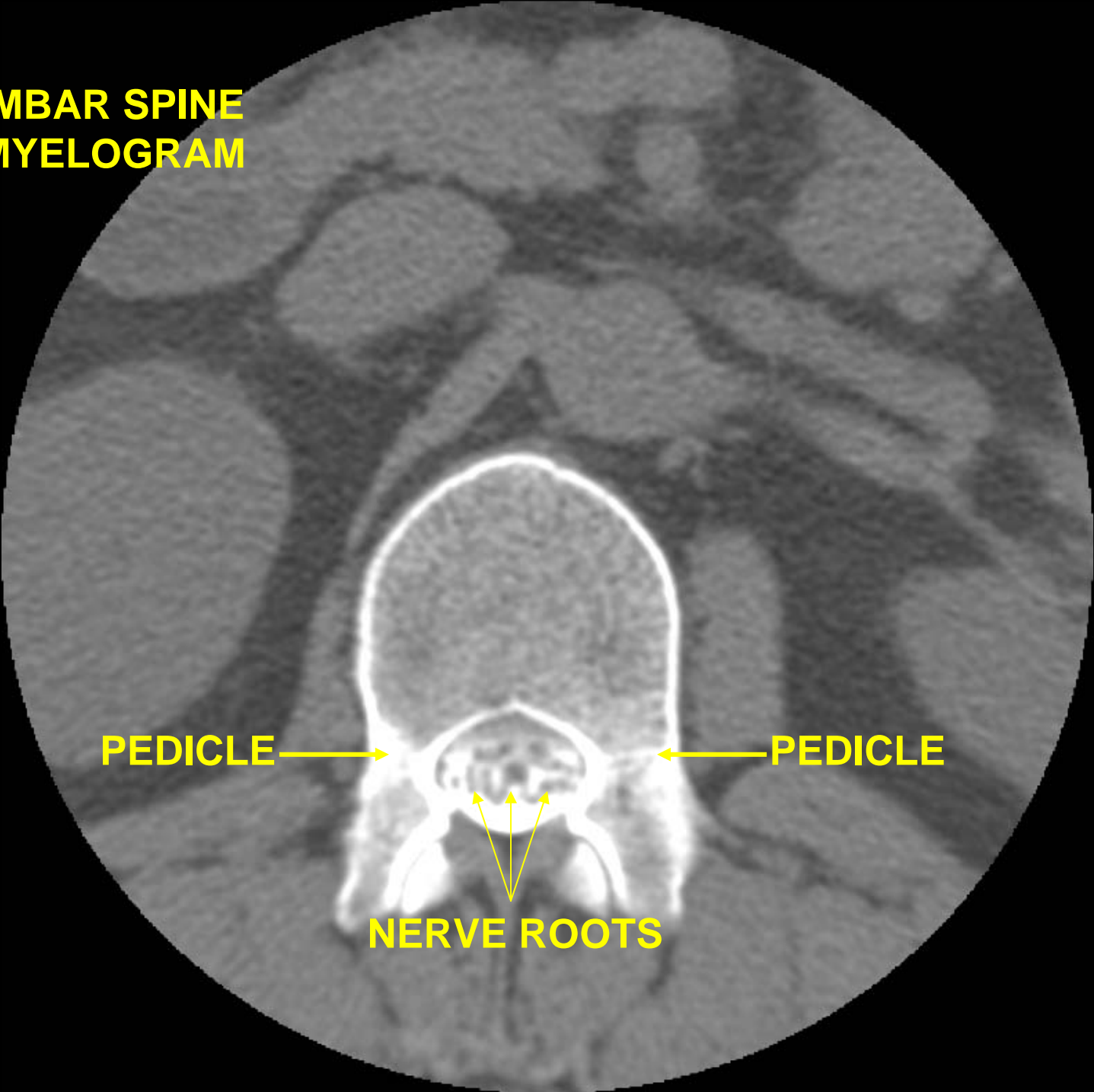
**CT- LUMBAR SPINE  
POST MYELOGRAM**



**FACET JOINTS**



**CT- LUMBAR SPINE  
POST MYELOGRAM**

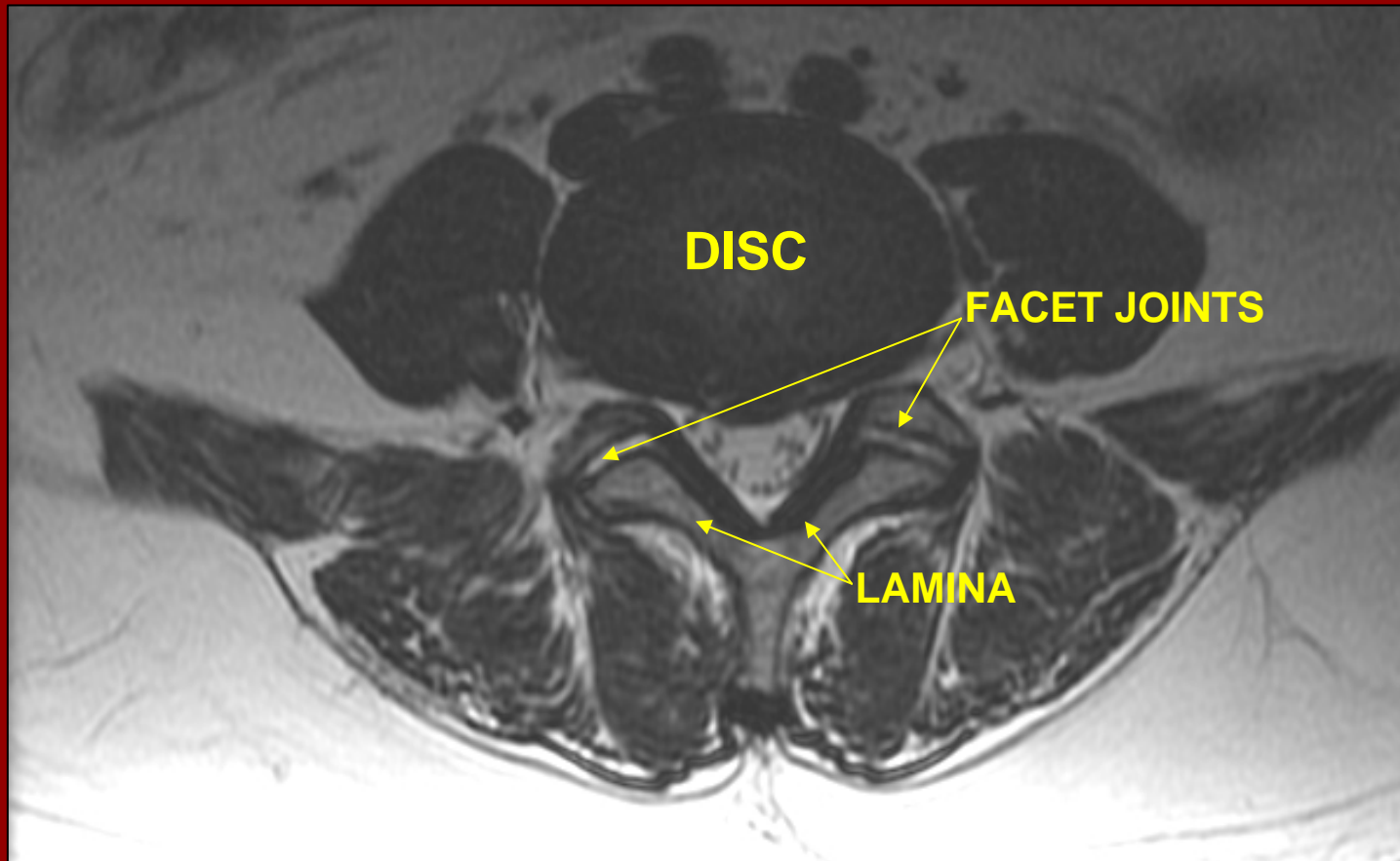


**PEDICLE** →

← **PEDICLE**

↑ ↑ ↑  
**NERVE ROOTS**

# MRI – LUMBAR SPINE AXIAL VIEW



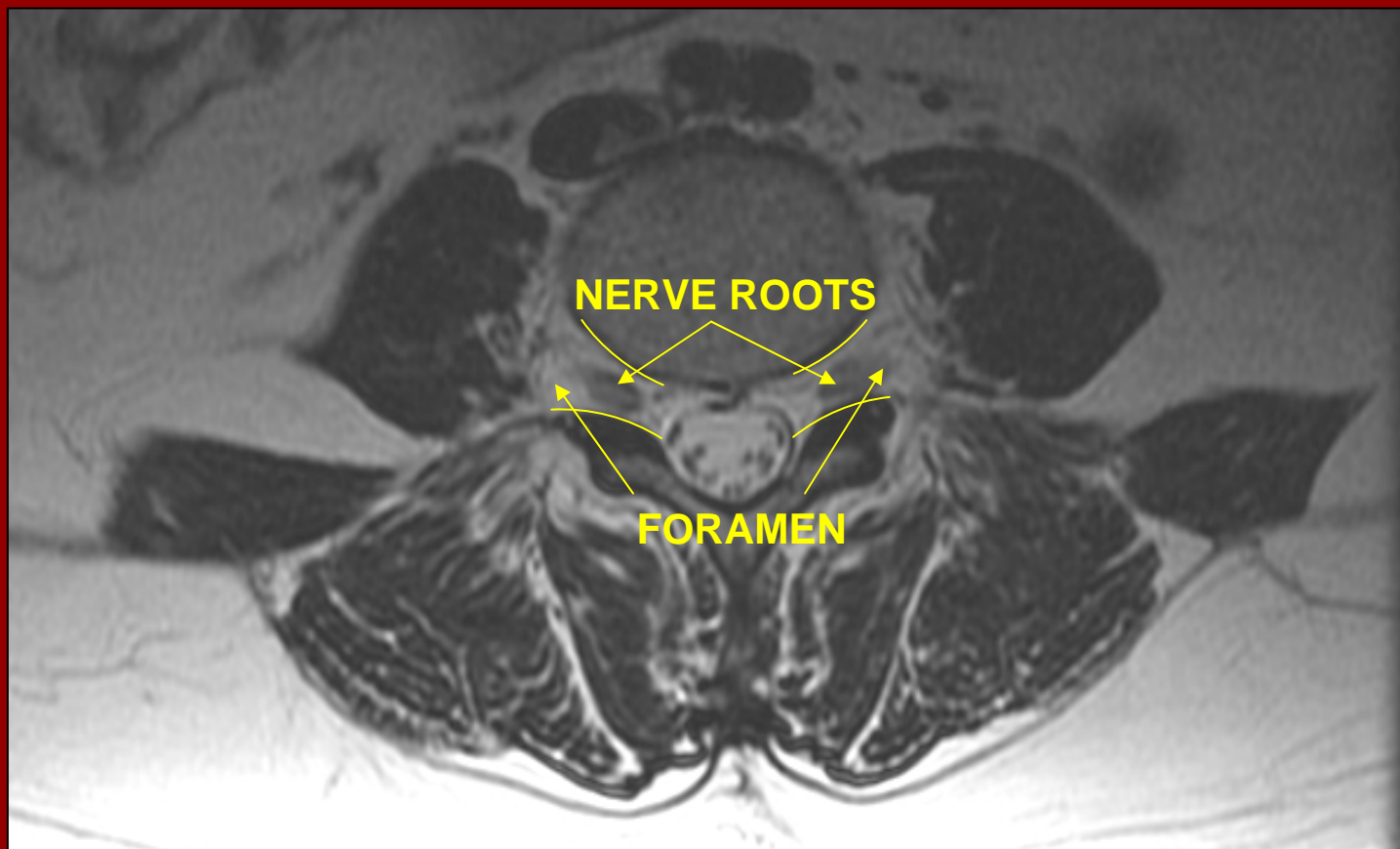
# MRI – LUMBAR SPINE

## AXIAL VIEW

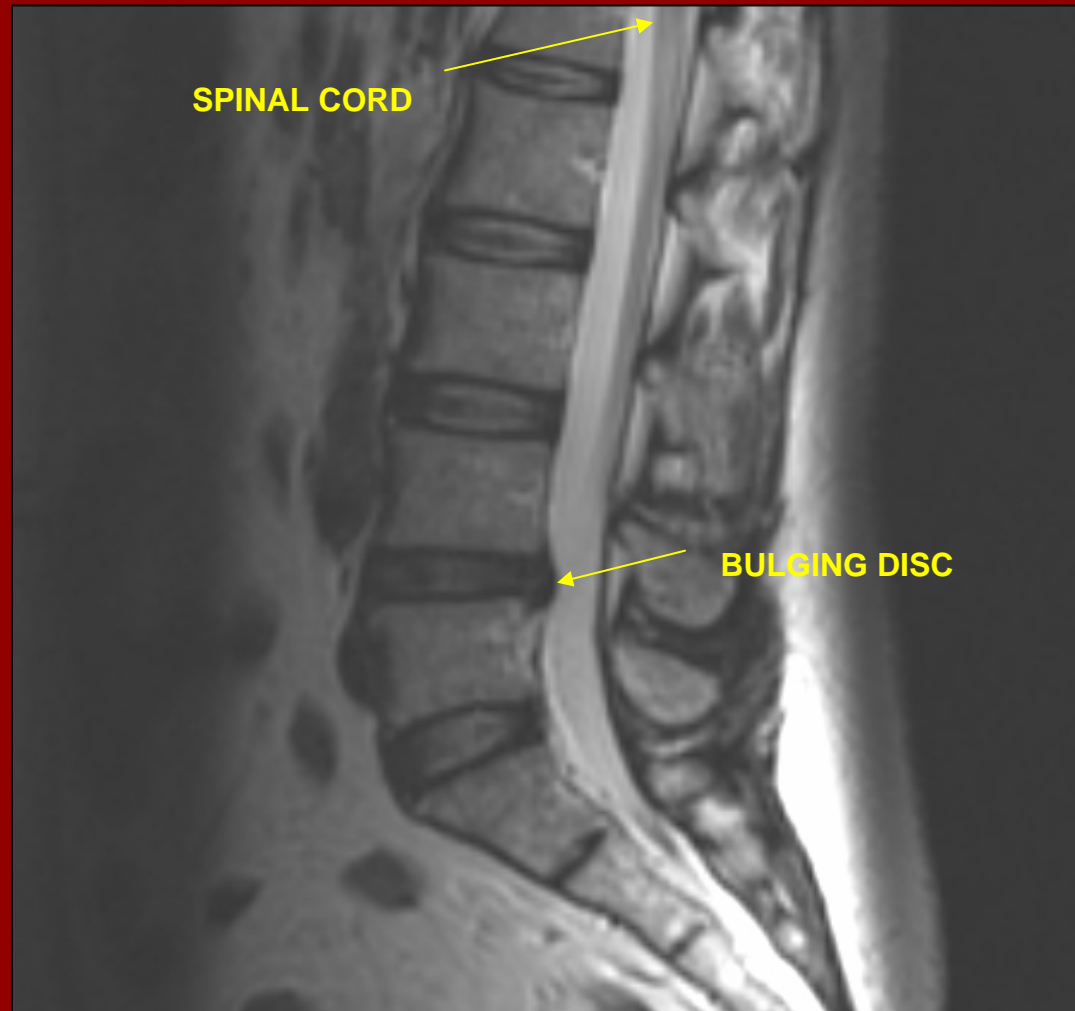


# MRI – LUMBAR SPINE

## AXIAL VIEW



**MRI- LUMBAR SPINE  
SAGITTAL**



**MRI- LUMBAR SPINE**  
**SAGITTAL**

